



JIFX 21-3
Experiment
Coordination Calls

5/12/2021

Agenda

COPERS

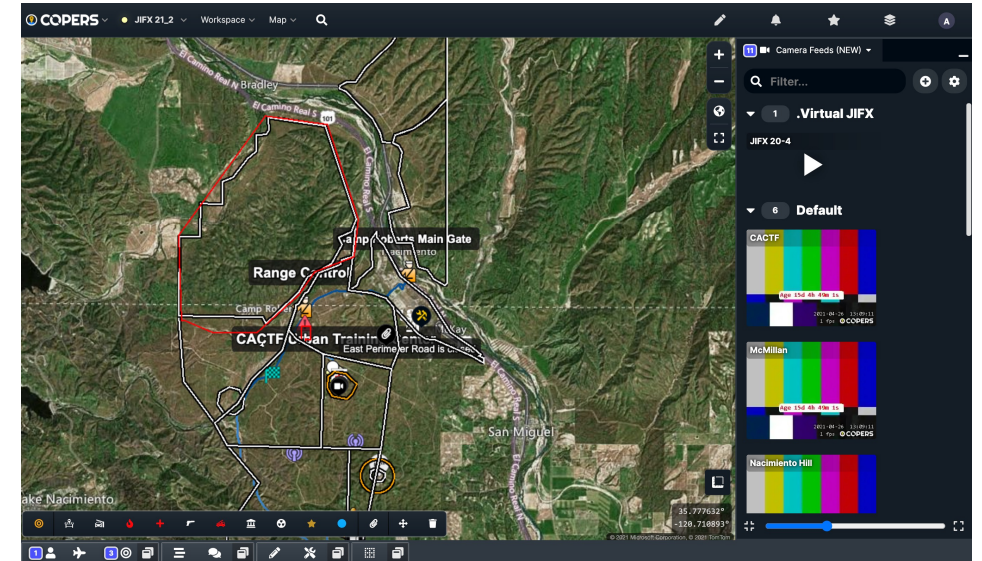
Experiment Collaborations

Q&A

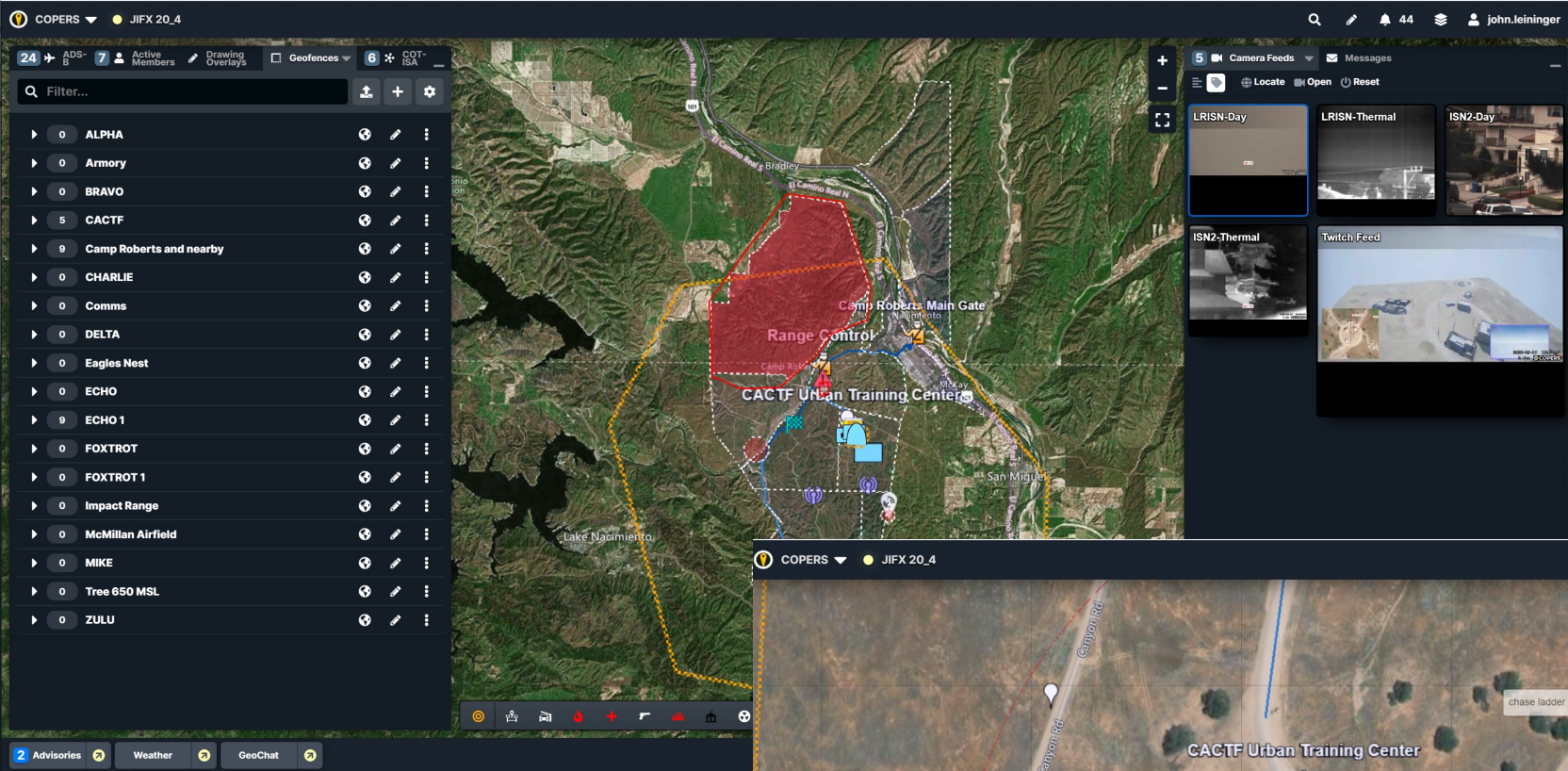
SLAMR Logistics (SLAMR Experiments Only)

COPERS

- COPERS Common Operating Picture (COP) provides real-time situational awareness of your connected experiment, team and equipment.
- COPERS provides a broad array of tools and integrations including:
 - Cursor on Target (CoT)
 - Android Team Awareness Kit (ATAK)
 - ADS-B
 - Geofencing
 - Ad hoc shared map drawing
 - geochat among ATAK devices and COPERS Users
 - Biomedical sensor status
 - Cameras feeds and live streams
 - Forms and checklists
 - Equipment management



<http://copers.tdkc.com/>



<http://copers.tdkc.com/>



COPERS – JIFX Integration

- Group logins available for each Experiment
- ADS-B
- Cursor on Target Integration
- Live Stream
 - YouTube
 - Twitch
- Camera Feeds
 - 1 connection between the camera feed and COPERS
 - Typically configured for, low frame rates (~1 frame / sec) to COPERS

Experiment Collaborations

What can you do to support other experiments?

How can other experimenters help you?

Aerocine Ventures inc	brian@getvermeer.com
AFRL/RW	andrew.balding.ctr@us.af.mil
Applewhite Aero, LLC	paul@applewhiteaero.com
Autonodyne LLC	sjacobson@autonodyne.com
BridgeComm, Inc.	joseph.campagna@bridgecomminc.com
DropDrone	daniel@dropdrone.co
Gantz-Mountain Intelligence Automation Systems Inc.	gwilson@gantz-mountain.com
GreenSight	james@greensightag.com
Innovative Algorithms	jay.chesnut@innoalgo.com
Insight Up Solutions	bley@insightupsolutions.com
Naval Postgraduate School	rrbuettn@nps.edu
Pison	dexter@pison.com

Seasats	mike@seasats.com
Skydio, Inc.	jenke@skydio.com
Spectrabotics, LLC	thaynie@spectrabotics.com
TETAC Incorporated	Mark.Benson@TETACinc.com
TMGcore LLC	seamus.egan@tmgcore.com
Tomahawk Robotics	tom.kennedy@tomahawkrobotics.com
U.S. Army CCDC Data & Analysis Center Aberdeen Proving Ground, MD	r.zimmerman@zcgrp.com
University of Nebraska - Lincoln	carrick@cse.unl.edu
USASOC	kenneth.tarrant1@us.army.mil
VRR (dba VR Robotics & VR Rehab)	khernandez@virtualrealityrehab.com
Yotta Navigation Corporation	andrew.hazlett@yottanav.com

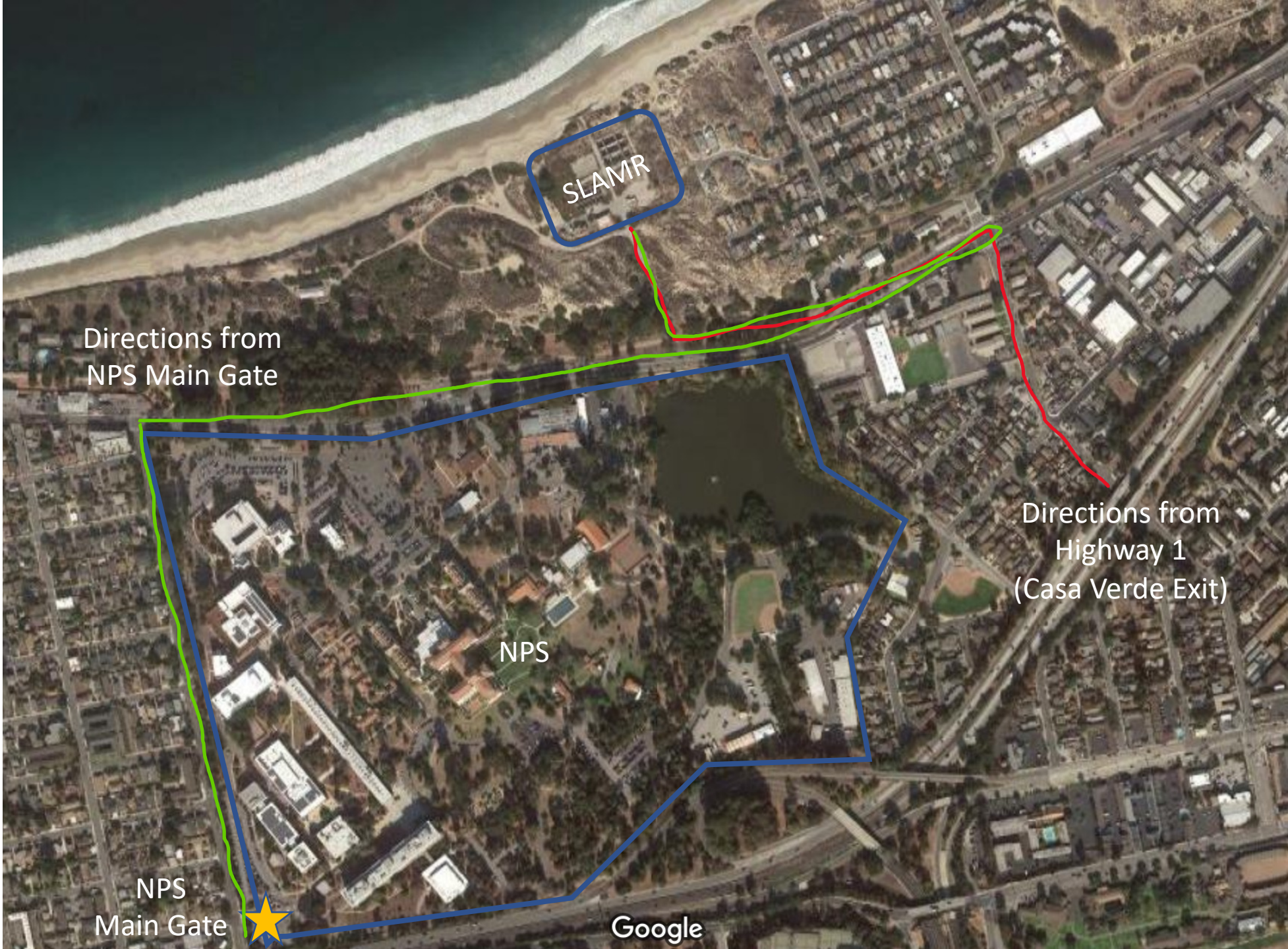


Questions?

SLAMR

- Lyla Englehorn, Site Manager
- Dr. Ray Buettner, JIFX Director (Thurs & Fri Only)
- Eugene Bourakov, Network Manager
- Brandon Naylor, Facilities

SLAMR will open at 0730 and close at 1730 each day



SLAMR

Directions from
NPS Main Gate

Directions from
Highway 1
(Casa Verde Exit)

NPS

NPS
Main Gate

Google



Aquatic
Tanks

Limited Parking

Classroom

Gate

Additional Parking

Additional Items

- Daily Check-In's
- NPS Campus Access
- Overnight Storage Requirements
- Badges