



# Training Guide



IT ALL STARTS HERE:

<http://copers.tdkc.com>



Launch page for the Common Operating Picture (COP) and links to the app stores for WatchTower (mobile application optional)

(redirects to [https://www.tdkc.com/MOLES\\_Server/](https://www.tdkc.com/MOLES_Server/))

❑ Click to sign into the COP



**COPERS**  
COMMON OPERATING PICTURE

COPERS Common Operating Picture (COP) provides real-time situational awareness of your connected team and equipment for short-term events, long-term day to day operations, and coordinated emergencies. COPERS provides a broad array of tools and integrations including Cursor on Target (CoT), Android Team Awareness Kit (ATAK), Integrated Sensor Architecture (ISA), ADS-B, geofencing, adhoc shared map drawing, geochat and video conferencing, biomedical sensor status, medical reports, cameras feeds and live streams, forms and checklists, and equipment management. Designed for tablets to laptops to Big board ops centers, COPERS provides the customizable COP to integrate your event.

[Sign In](#)

© 2021 Centauri

WAVE FRAMEWORK | Air Force Research Lab Sensors Directorate | centauri

☐ Enter a name or callsign-  
how you wish to be  
identified in the list of active  
users

☐ Select an event

Please Sign In

 **COPERS**

Name or Callsign

Event

- .Fire WPAFB
- .SFS SAFB
- .SFS WPAFB
- Air Force National Guard
- COVID-19
- JIFX 21\_2
- RQOE
- Test Event 6
- Top 3 SOF

☐ Select your group

☐ Enter the password

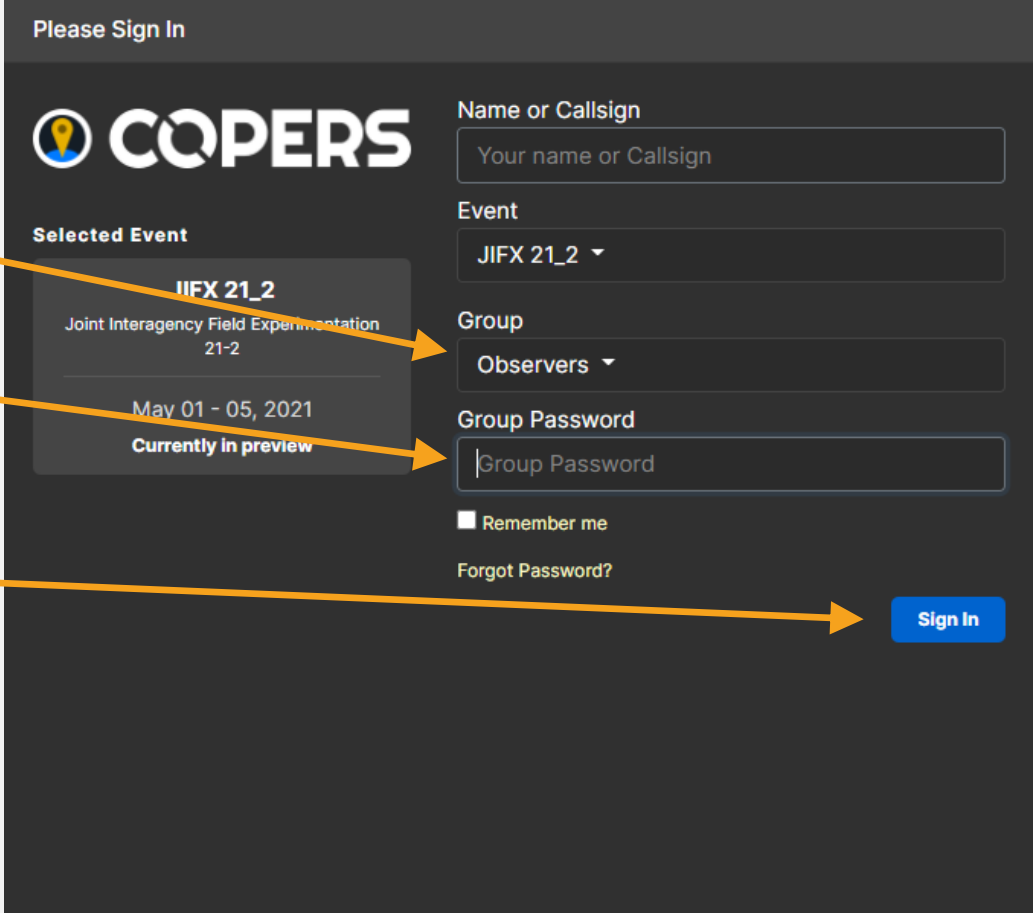
See an event administrator for password.

☐ Click “Sign In”

**Groups:**

The group you select will in part determine what other users you are associated with for broadcast communications. It will also determine your icon on the map.

Groups are configured with the event so this list can be changed.



The image shows a 'Please Sign In' screen for the COPERS application. It features the COPERS logo at the top left. Below the logo, there is a 'Selected Event' section showing 'IIFX 21\_2' (Joint Interagency Field Experimentation 21-2) for the dates 'May 01 - 05, 2021', with a note 'Currently in preview'. To the right of the event section are three input fields: 'Name or Callsign' (with placeholder text 'Your name or Callsign'), 'Event' (a dropdown menu currently showing 'JIFX 21\_2'), and 'Group' (a dropdown menu currently showing 'Observers'). Below these is a 'Group Password' input field. There are also checkboxes for 'Remember me' and a link for 'Forgot Password?'. At the bottom right is a blue 'Sign In' button. Three orange arrows originate from the left side of the slide: one points from 'Select your group' to the 'Group' dropdown, another from 'Enter the password' to the 'Group Password' field, and a third from 'Click “Sign In”' to the 'Sign In' button.

# TABLE OF CONTENTS

- [Capabilities](#)
- [Title Bar Tools](#)
- [CORDON/Quick Drop Icons](#)
- [Tool and Summary Selection](#)
- [Map Capabilities](#)
- [Administration](#)
- [Communication](#)
- [Current Situation](#)
- [Data](#)
- [Input](#)
- [Maps](#)
- [Medical](#)
- [Notifications](#)
- [Summary](#)
- [Tracking](#)
- [Images & Video](#)

# CAPABILITIES

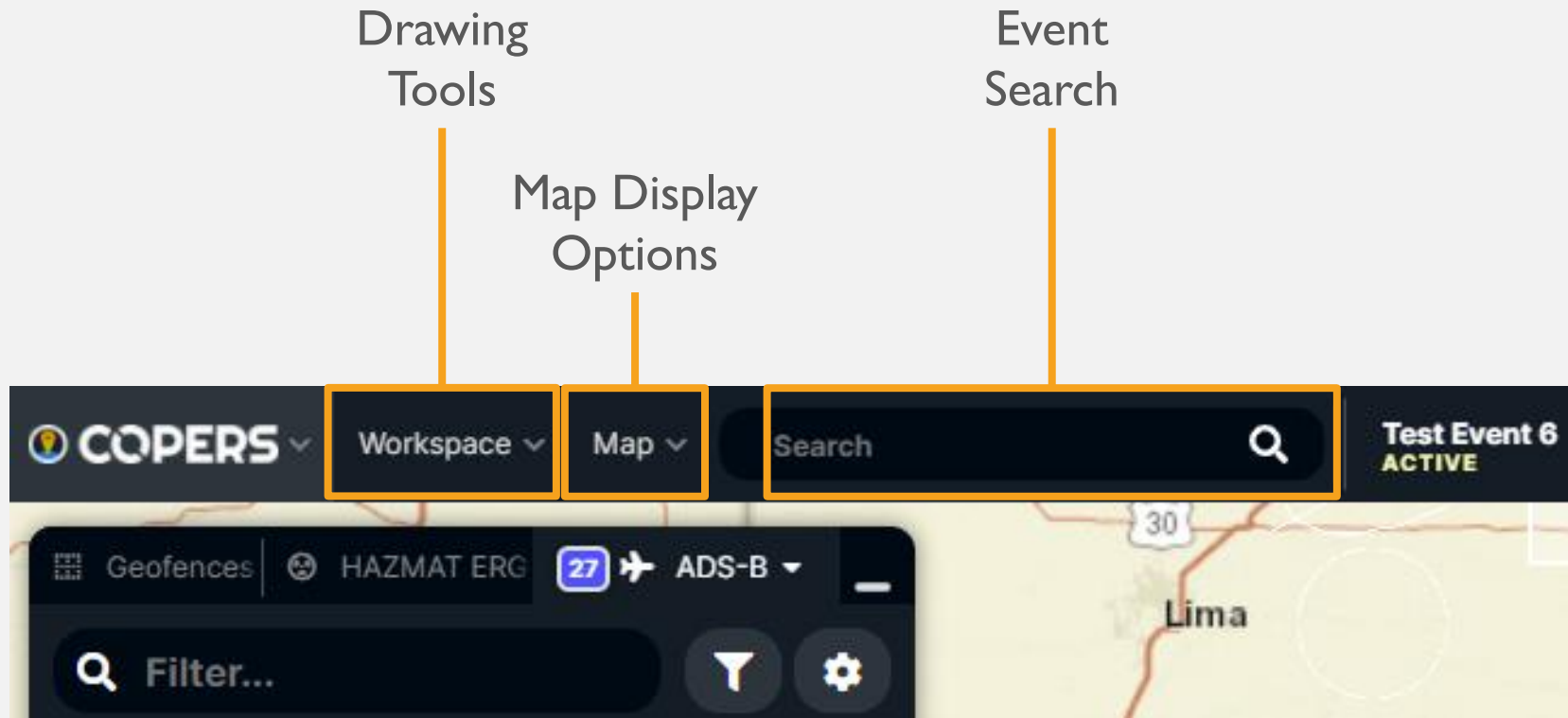


## CORDON/Quick Drop Icons/ Camera, Move, Delete

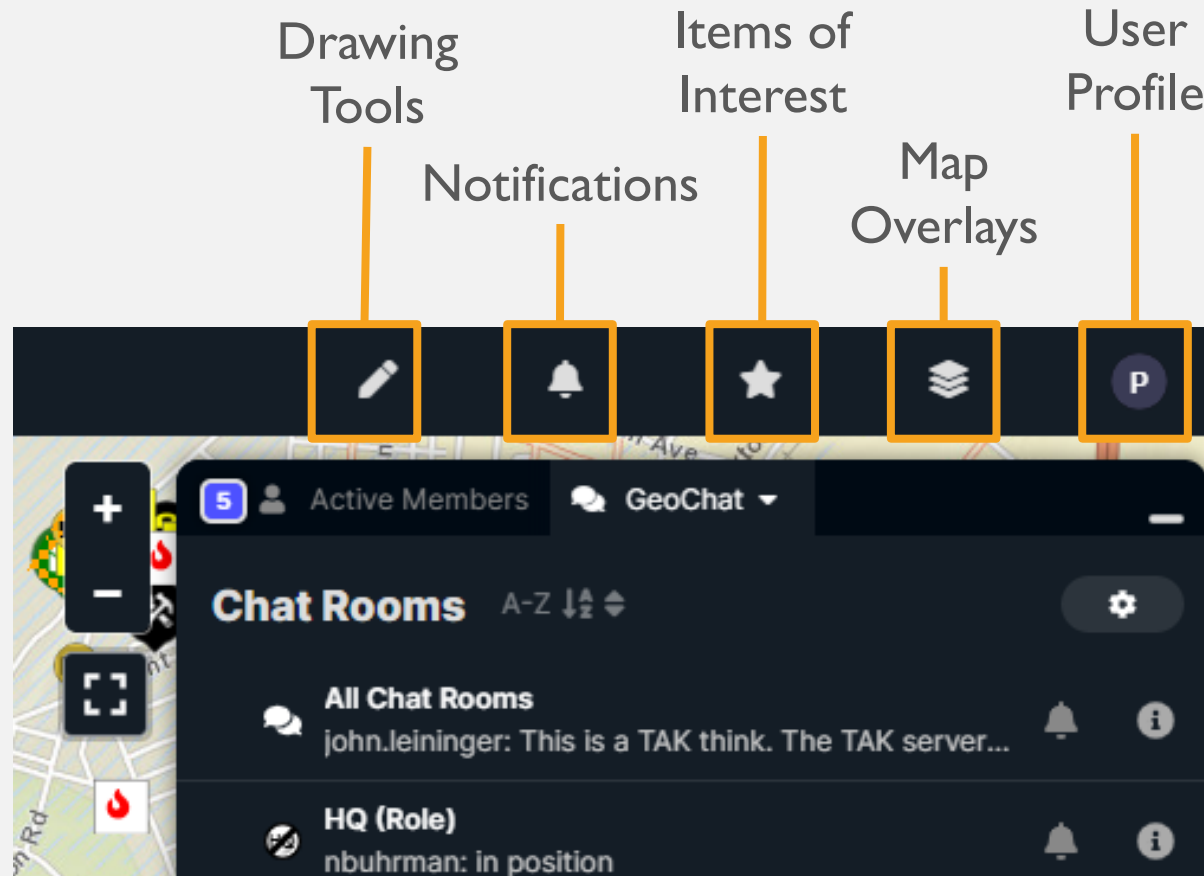


# TITLE BAR TOOLS

# Workspace, Map and Search



# Drawing Tools, Notifications, Items of Interest, Map Overlays, and User Settings

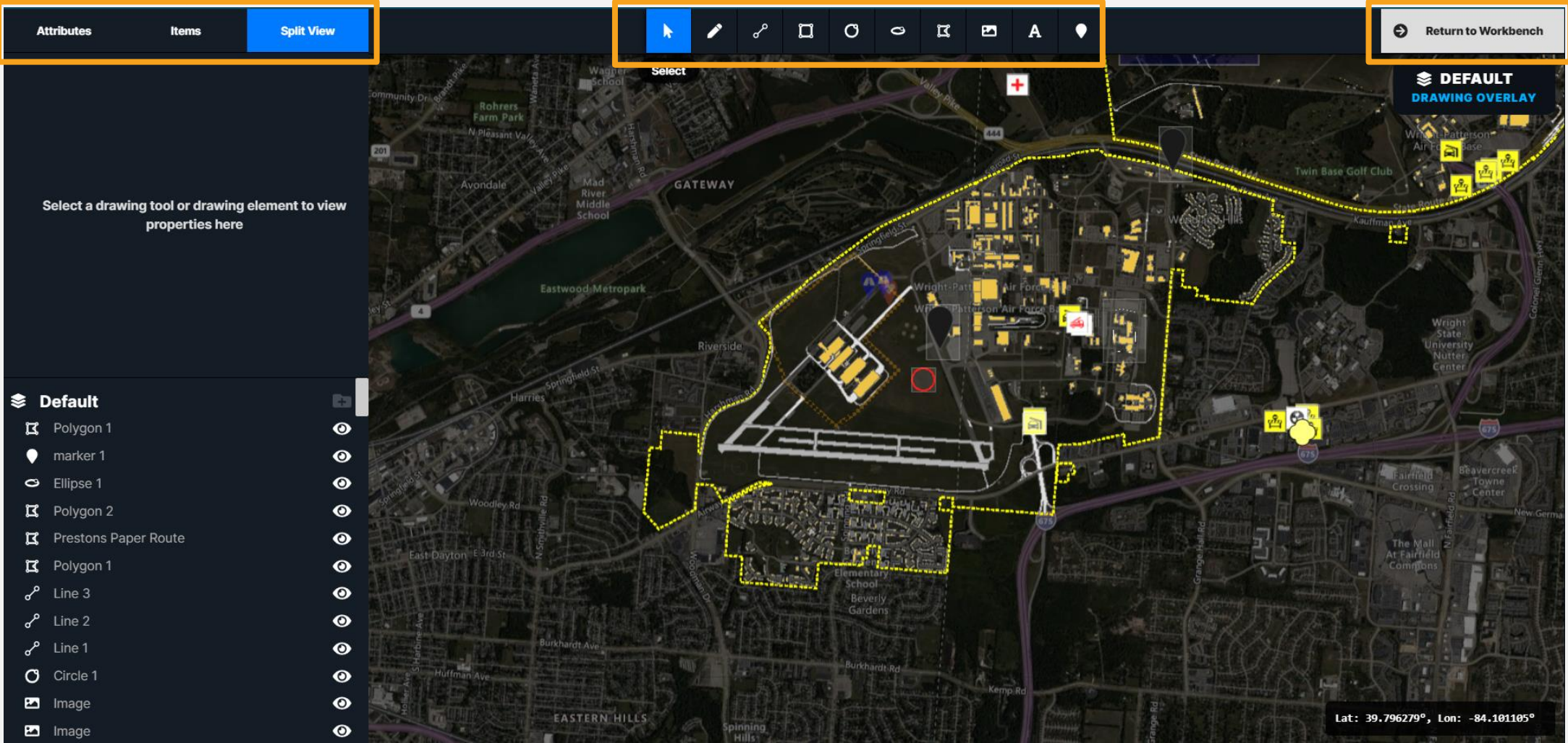


# Drawing Tools Overview

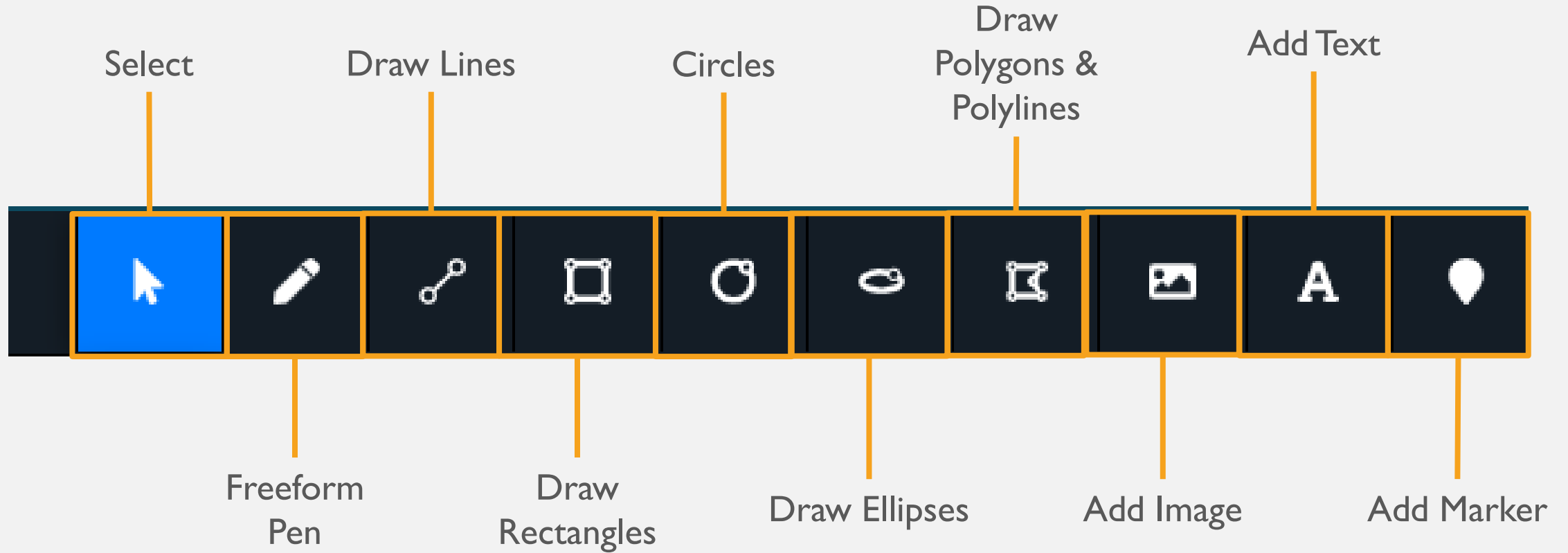
View Attributes, Items, or  
both in Split View

Draw Tools and Elements

Return to Workbench



# Drawing Tools



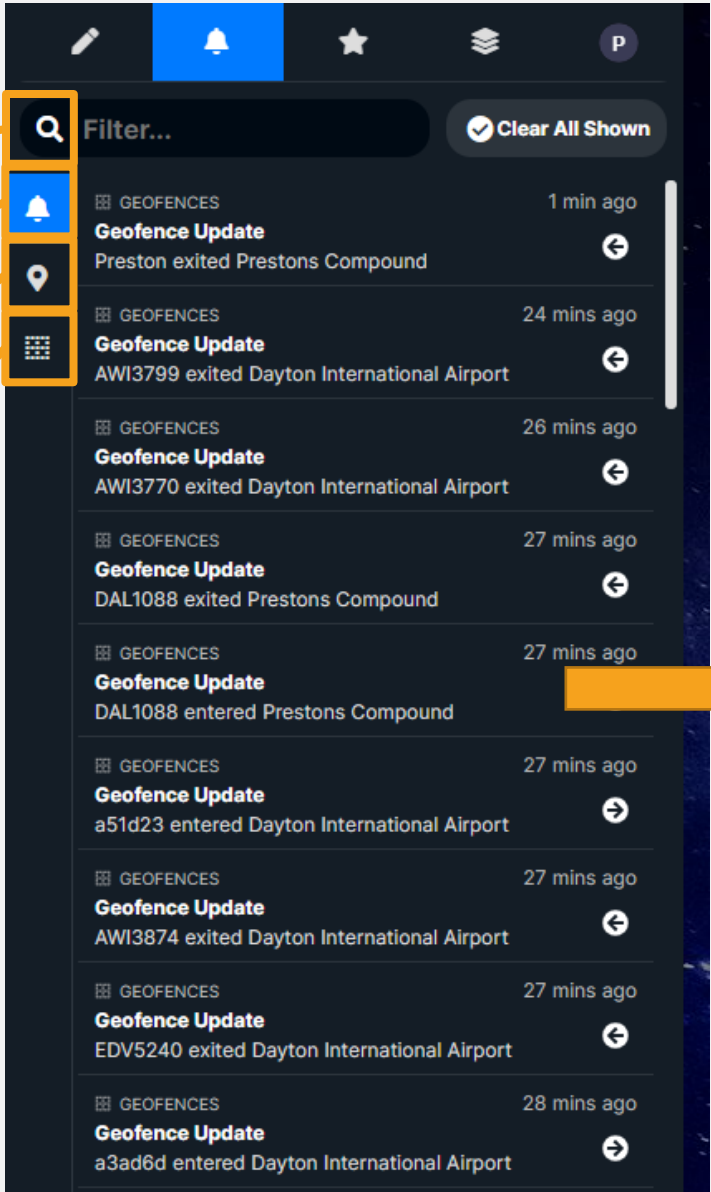
# Notifications

Free text filter

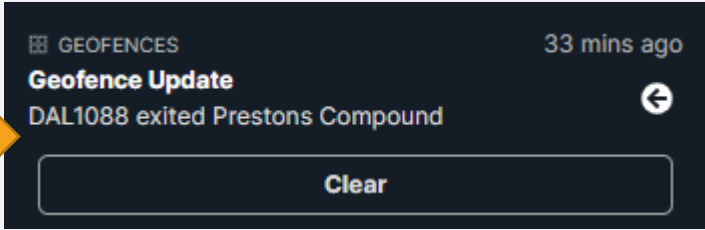
All Notifications

COP Users

Geofences



Notifications allows users to view all existing Notifications, Clear All Notifications, or clear individual Notifications.

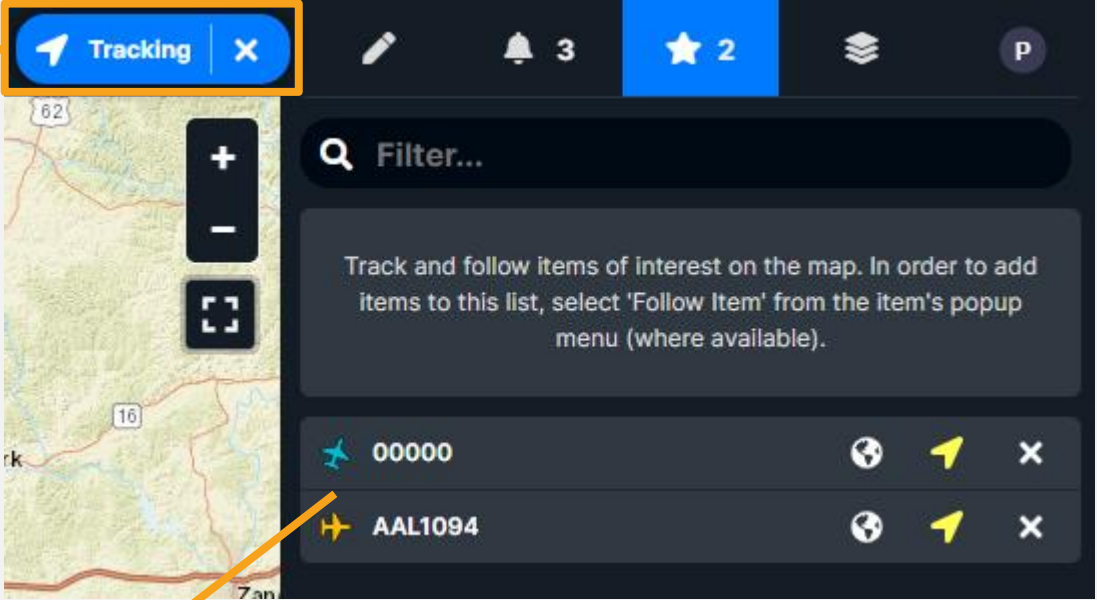


Clicking on a notification allows it to be cleared from your display.

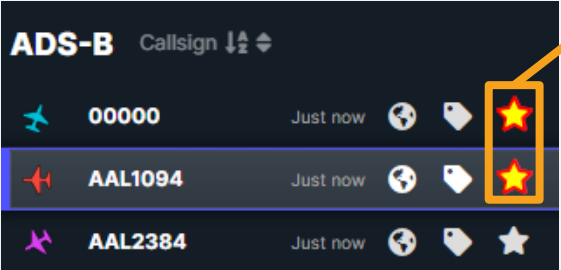


# Items of Interest

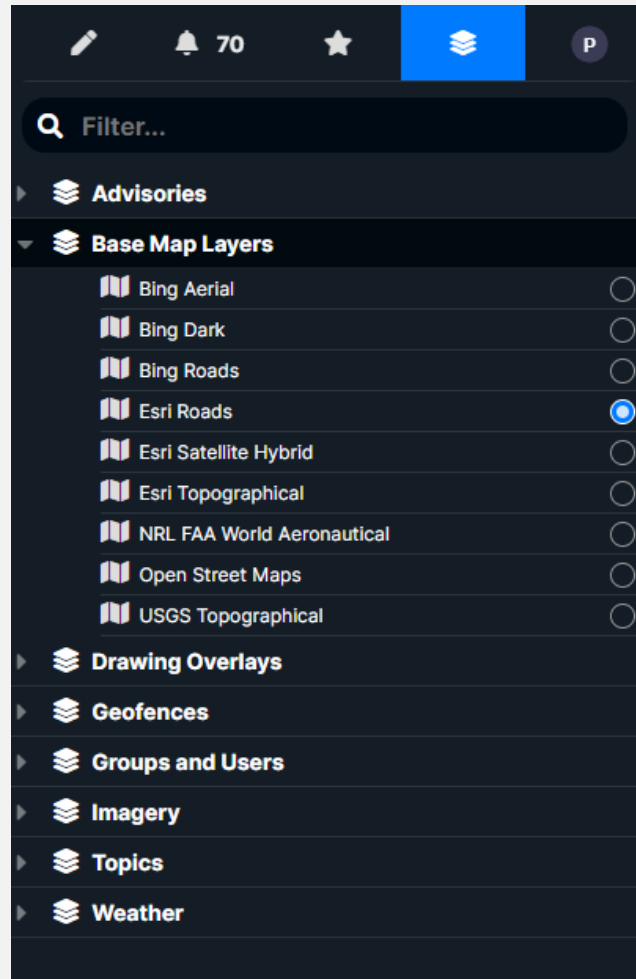
Tracking  
Status



A list of high interest items on the map. User selected, by clicking the STAR next to items in various tools. All items will be tracked and remain in view. If you move the map or zoom in/out tracking will pause

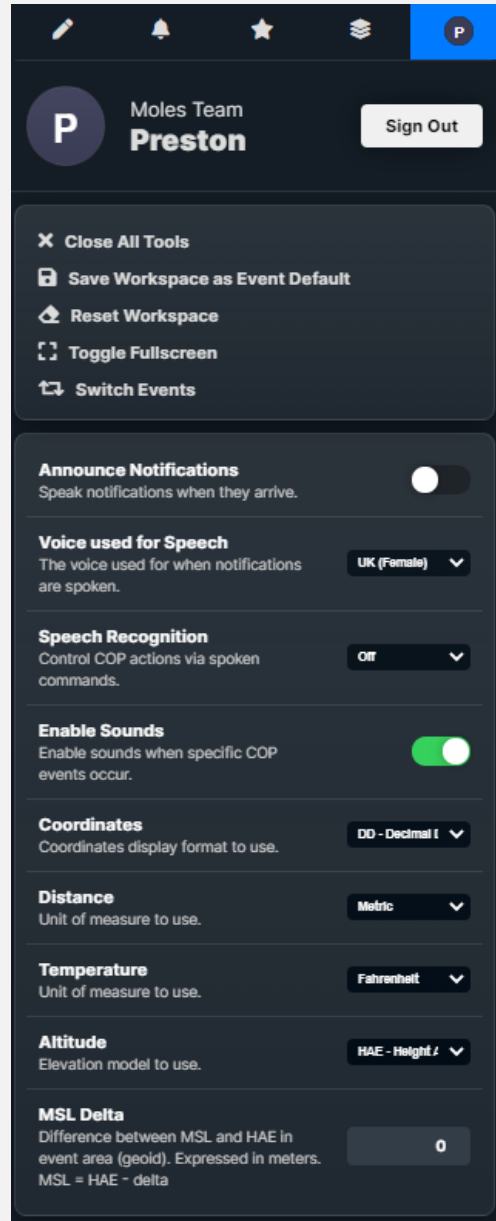


# Map Overlays



Map Overlays displays all overlays being used in COPERS and provides the ability to turn overlays on and off.

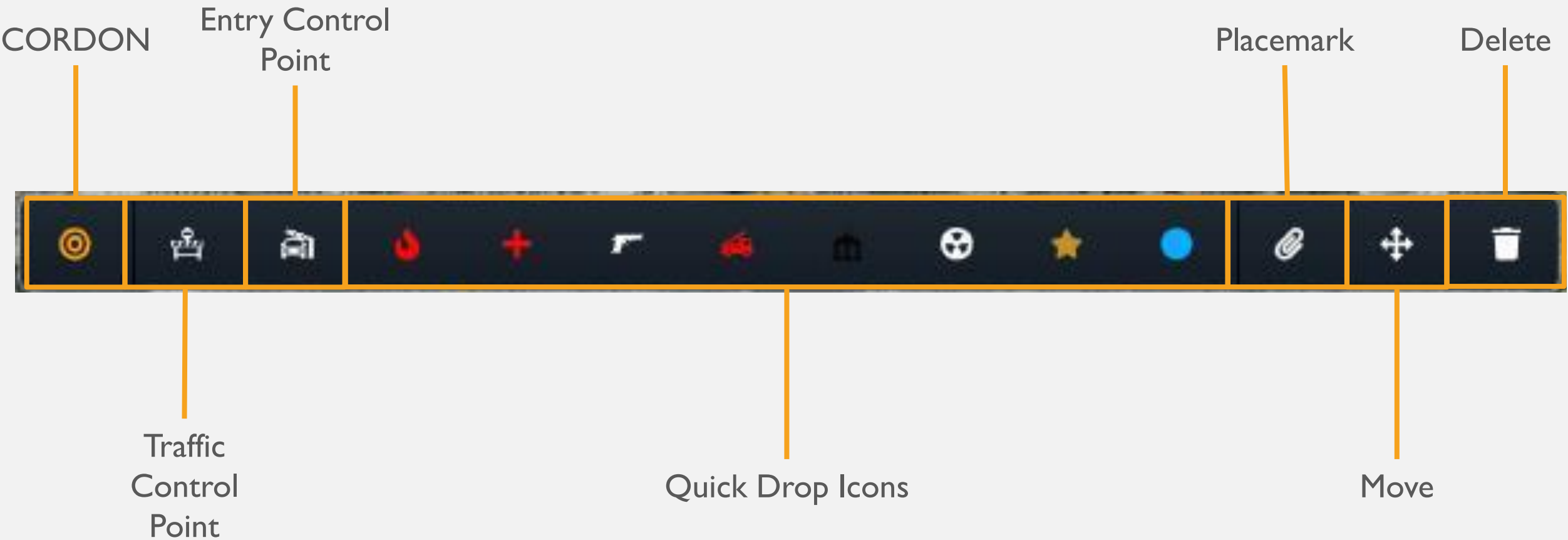
# User Profile



User Profile allows users to Sign Out of the event, Close All Tools, Save Workspace as Event Default, Reset the Workspace, Toggle Fullscreen, Switch Events, and select options for the current event.

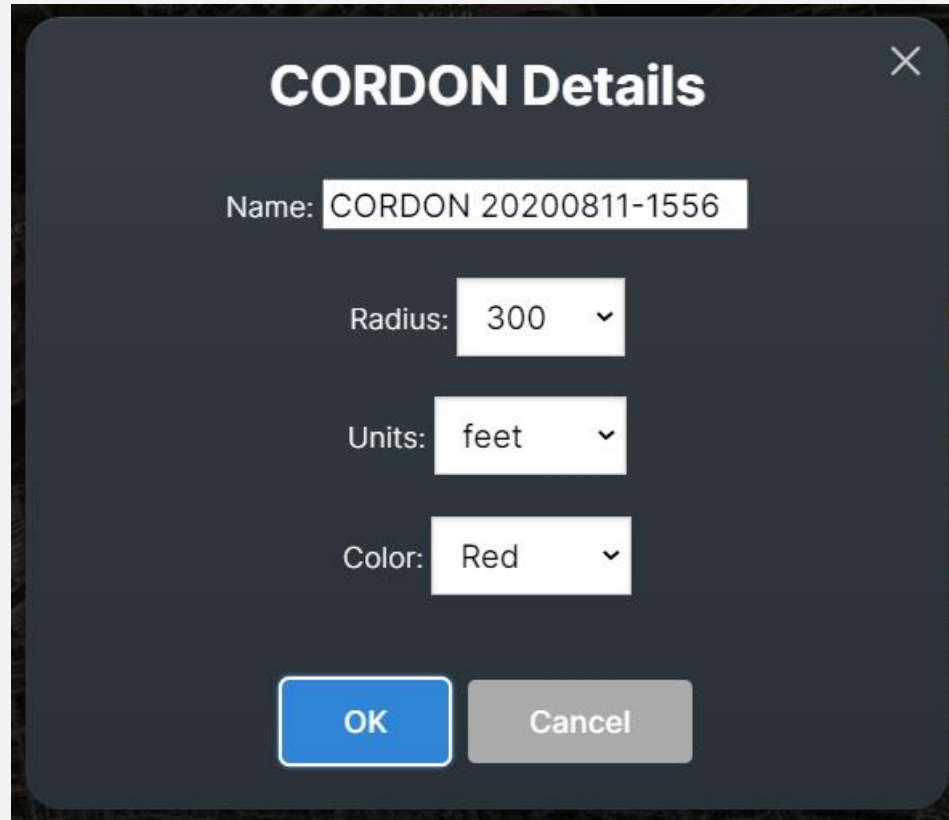
## CORDON/QUICK DROP ICONS

# CORDON/Quick Drop Icons/Camera, Move, Delete\*



\*Some features enabled/disabled based on user role and may be unavailable.

# CORDON

A dark-themed dialog box titled "CORDON Details" with a close button (X) in the top right corner. It contains three input fields: "Name:" with the value "CORDON 20200811-1556", "Radius:" with a dropdown menu showing "300", and "Units:" with a dropdown menu showing "feet". Below these is a "Color:" dropdown menu showing "Red". At the bottom are two buttons: "OK" (blue) and "Cancel" (gray).

**CORDON Details**

Name: CORDON 20200811-1556

Radius: 300

Units: feet

Color: Red

OK Cancel

Selecting CORDON, then clicking a location on the map and dragging the circle to the desired radius allows the user to enter a name, a radius, and a color. Clicking “Ok” when complete adds the CORDON Geofence to the map.




# Quick Drop Icons



Quick Drop Icons provide quick select-and-drop icons for traffic control, entry control points, fire, triage, active shooter, fire truck, command post, hazardous material, stars, and points. The icons may be placed on the map by clicking the icon, then clicking the desired location on the map. After placing an item, more items may be placed without re-clicking that icon. Items may also be moved after placed as long as a different icon has not yet been selected.

# Placemarks, Move, Remove



The Paperclip Icon provides the capability to attach a file (image, document, etc.) to a placemark on the map. Selecting the icon and selecting a file in the pop-up window will attach a file to a placemark. The position, contents, and any additional information about the placemark may be accessed or edited using the Attach tool (  ).

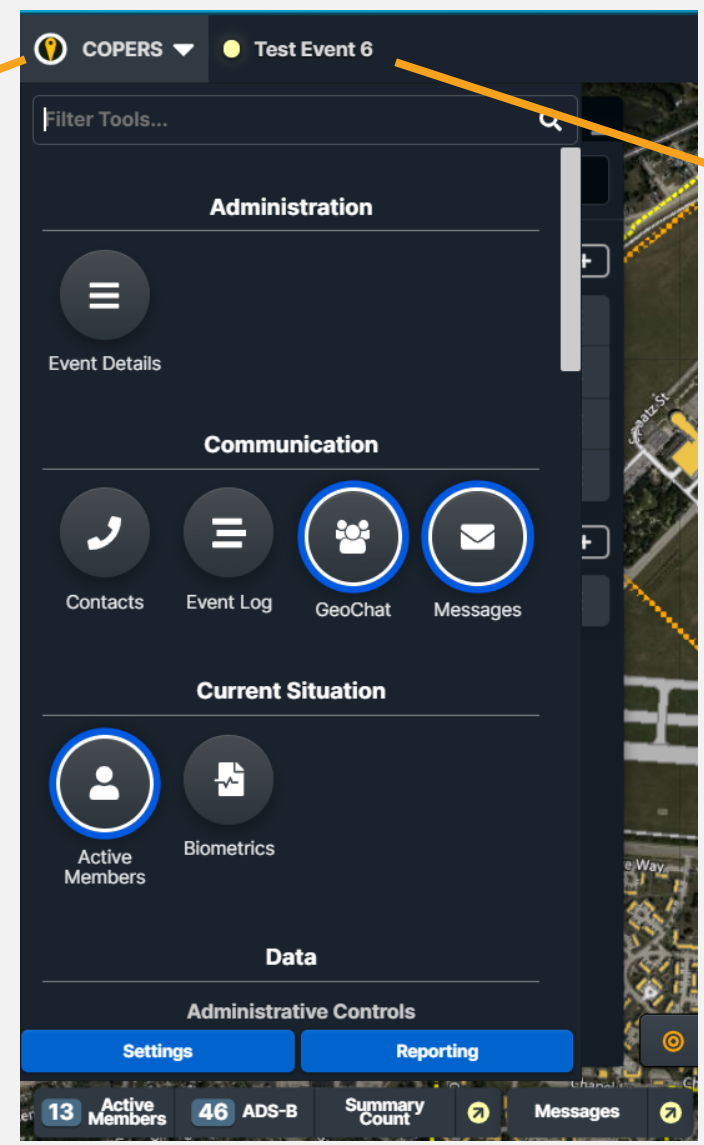
The Move Icon allows the user to move any icon on the map by left-clicking the Move Icon, then clicking an icon on the map, moving it to the desired location, then placing the item by clicking again.

The Delete Icon allows the user to delete an icon by selecting the Delete icon, then clicking an icon on the map that will be deleted.

# TOOL AND SUMMARY SELECTION

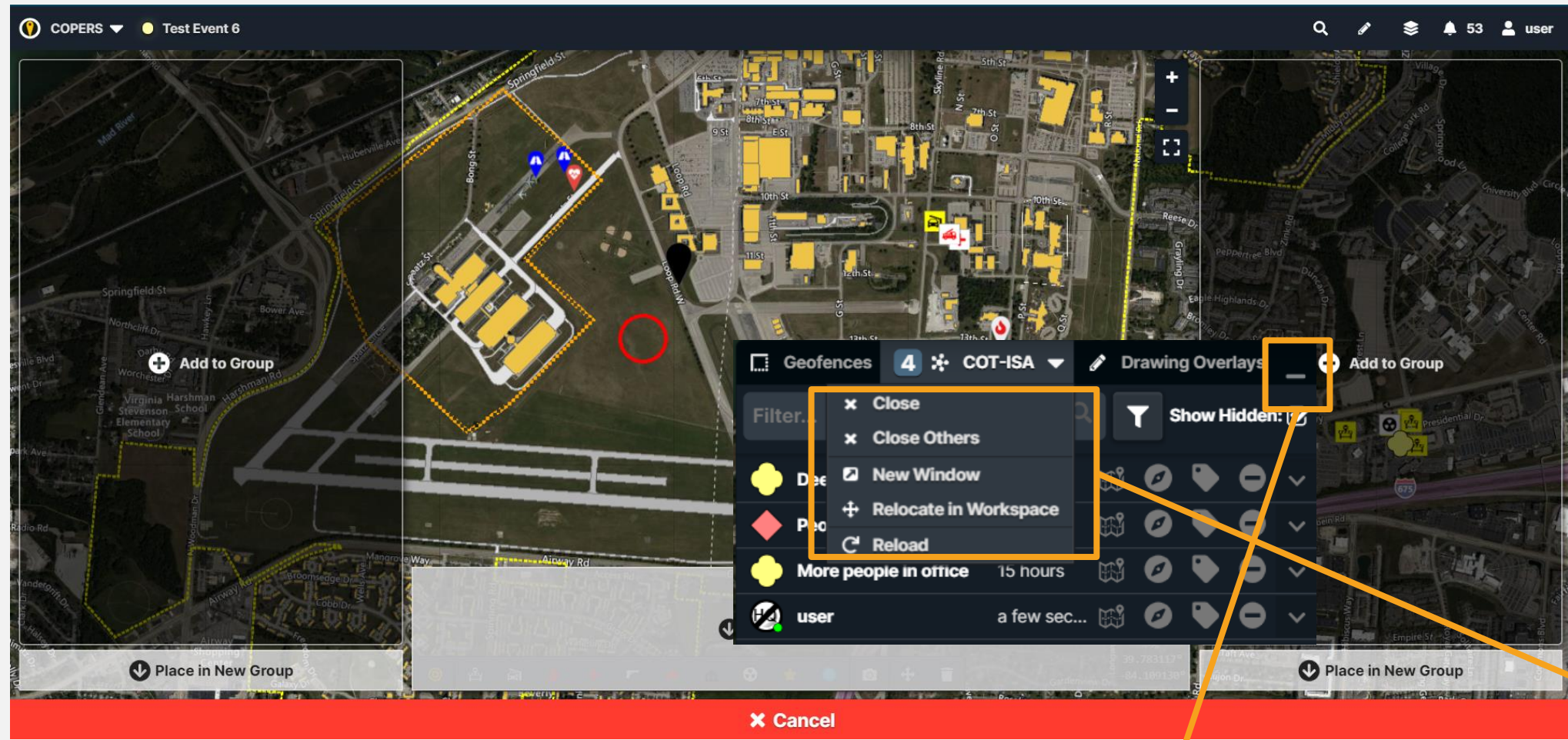
# Tools, Reference Data, Actors and Communication, Summary

Tools, Reference Data, Actors and Communication, and Summary selections may be made by clicking on the COPERS drop-down in the top left corner.



Yellow pulsing dot indicates event is active.

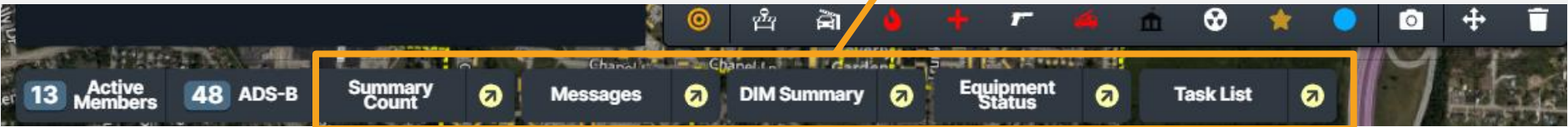
# Tool Location Selection



When a tool is selected the user is prompted to select the location of the tool. Multiple tools may be placed in a group

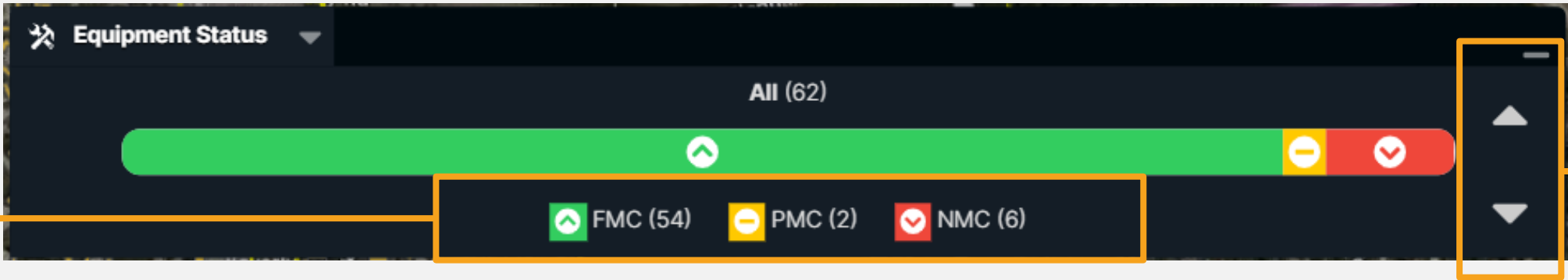
Drop-down tool options such as close, close other tools, open in a new window, or relocate in the workspace are available

Tool groups may be minimized to the bottom of the screen or restored.

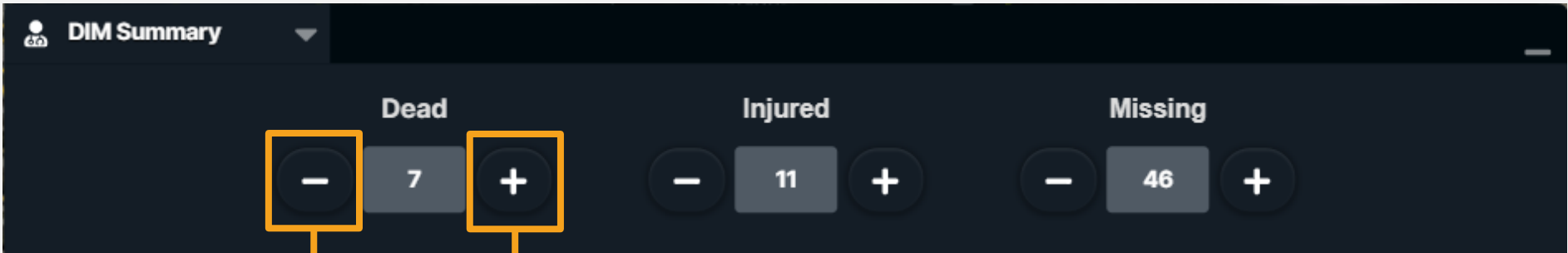


# Summary and Roll-Up

Legend and  
Numerical  
Count



Vertical  
Scroll



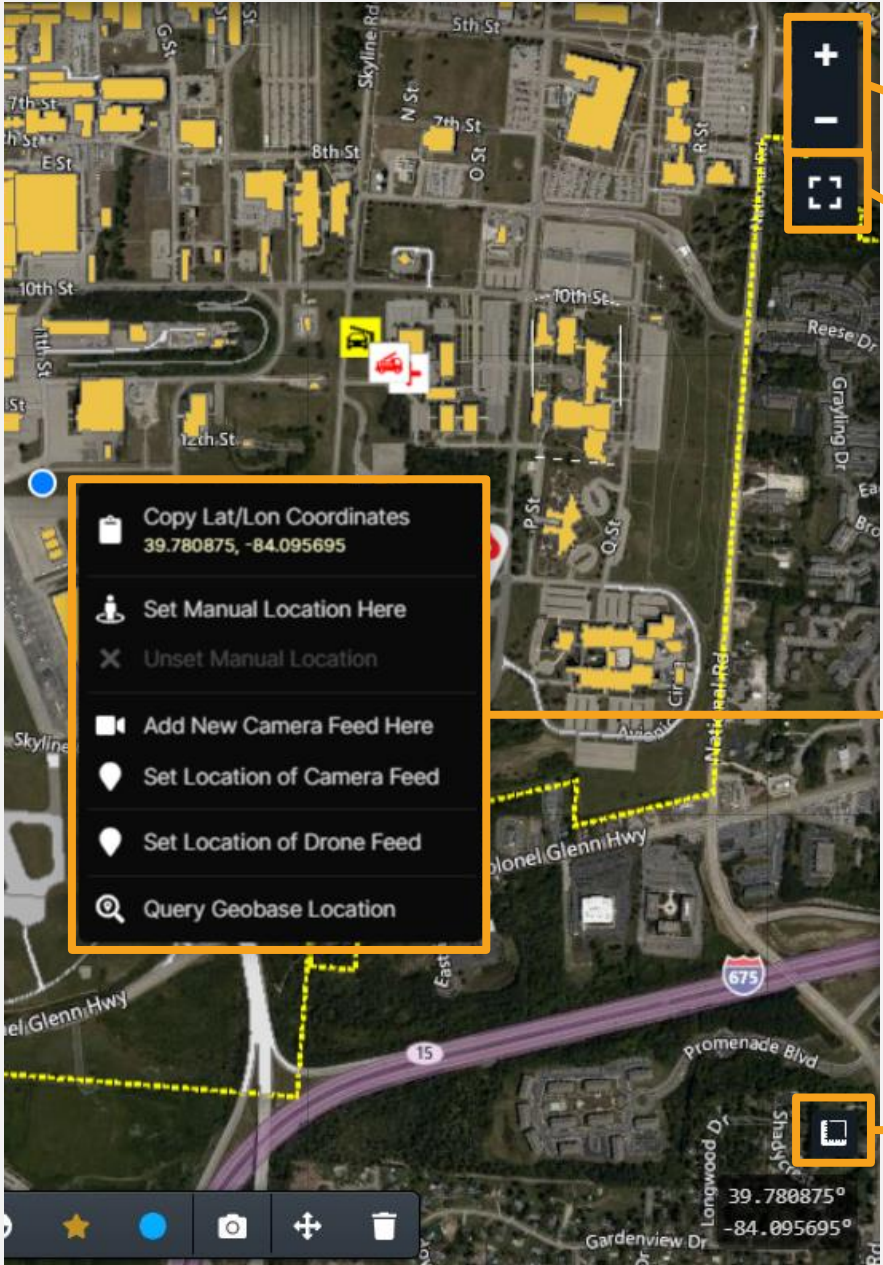
Add/Subtract  
Count\*

\*Some features enabled/disabled based on user role and may be unavailable.



## MAP CAPABILITIES

# Map Capabilities



Zoom In/Out

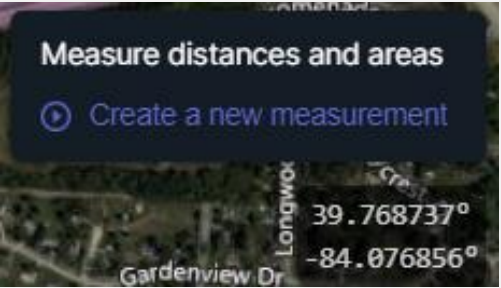
Center on Event

Options provided by right-clicking map

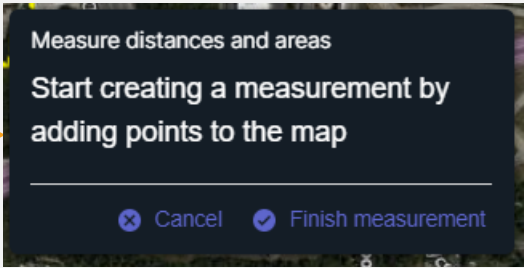


Measure Distances/Areas

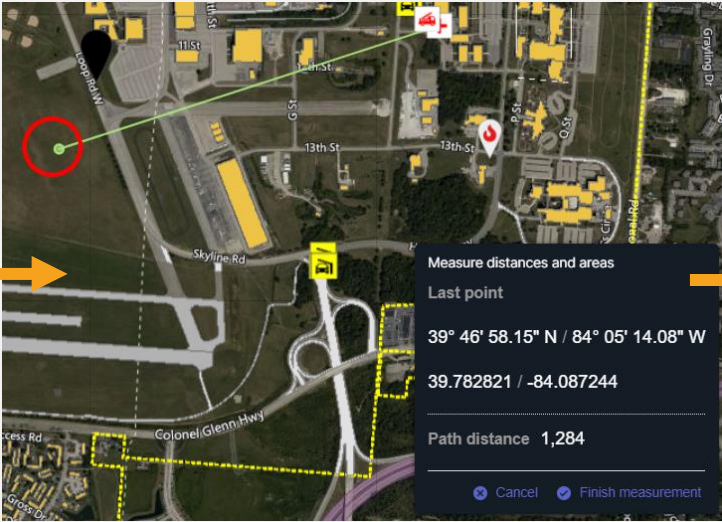
# Measure Distances/Areas



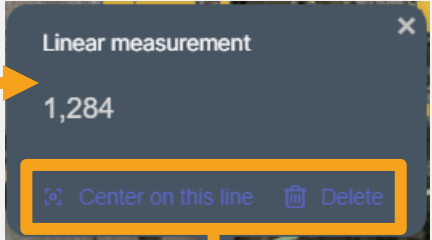
Click the Measure Distances /Areas. Click “Create a new measurement”.



Click on two points on the Map to get distance measurements or click several points to create a polygon and obtain the area.



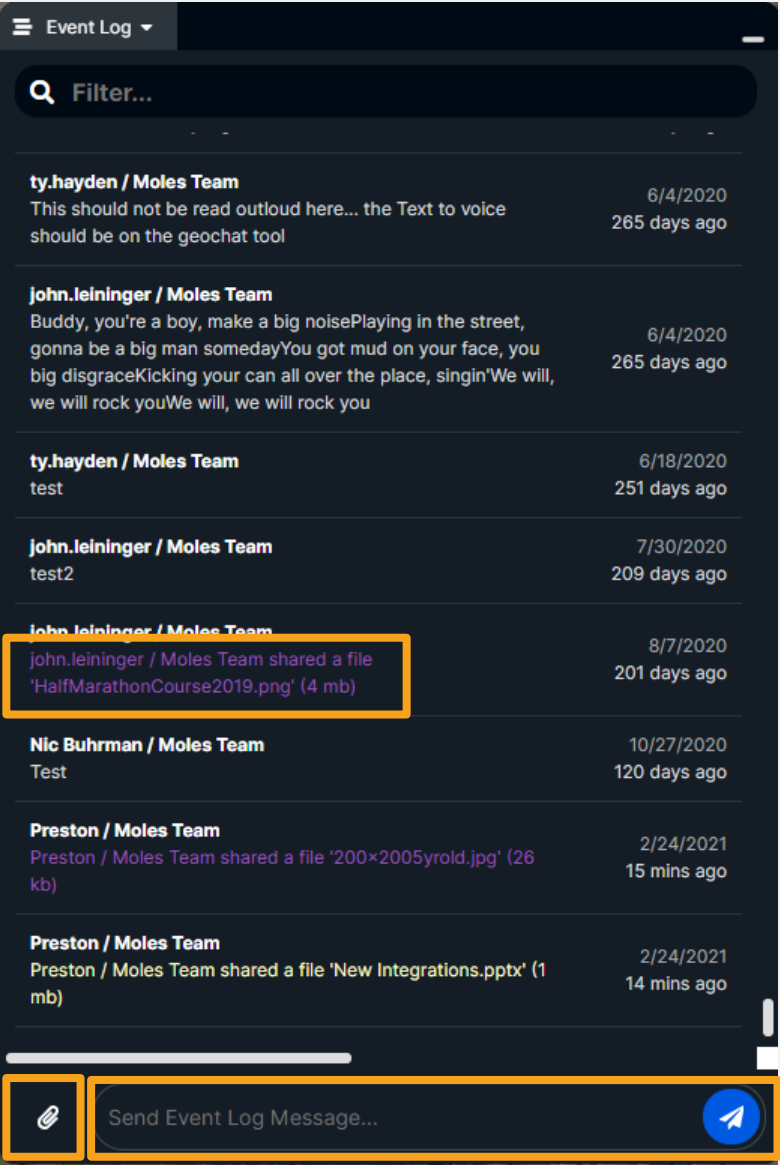
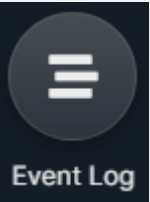
Click “Finish measurement” or “Cancel”.



Once a measurement is obtained, the distance or area may be centered on the map or deleted.

# COMMUNICATION

# Event Log



Clicking an attachment will open it in a new browser window, or download the file

Attach a file

Event Log allows users to send messages or files with other users. Submitting a log or attaching a file will be shared with all other event users. This is a rolling log and not intended for interactive chat. Use GeoChat for that.

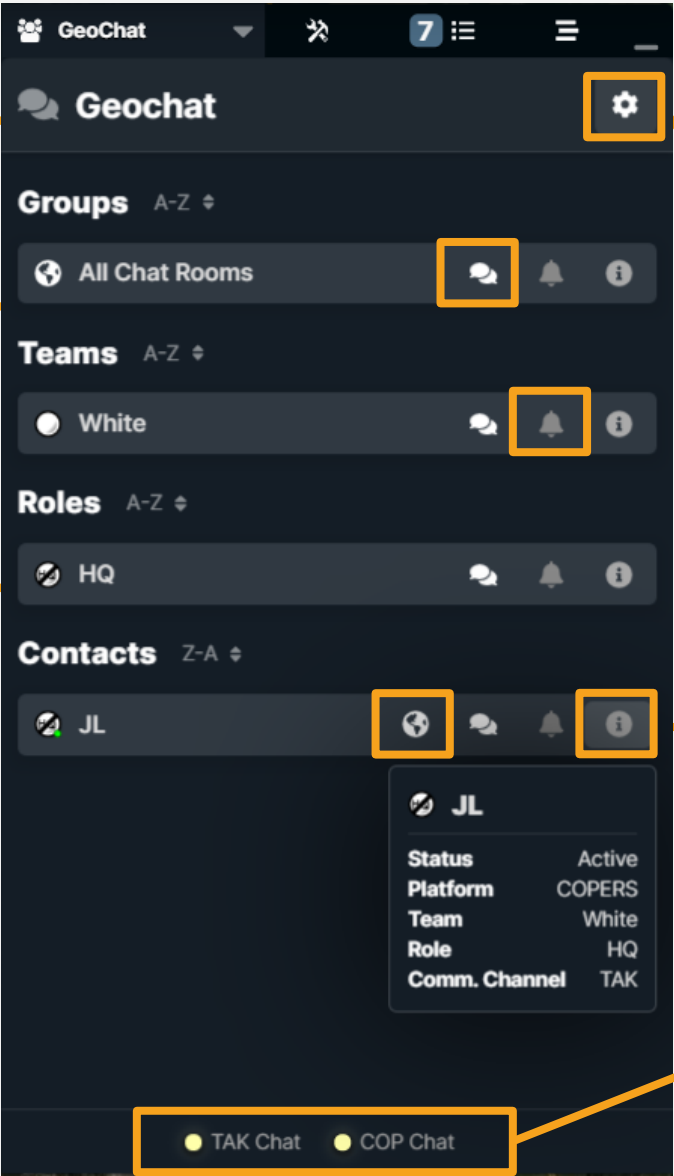
Enter text of log here

# GeoChat

View Chats

Toggle Notifications

Fly To Location (if available)



GeoChat allows users (COP and TAK) to send and read messages.

Show or Hide Inactive Users

Info Details (if available)

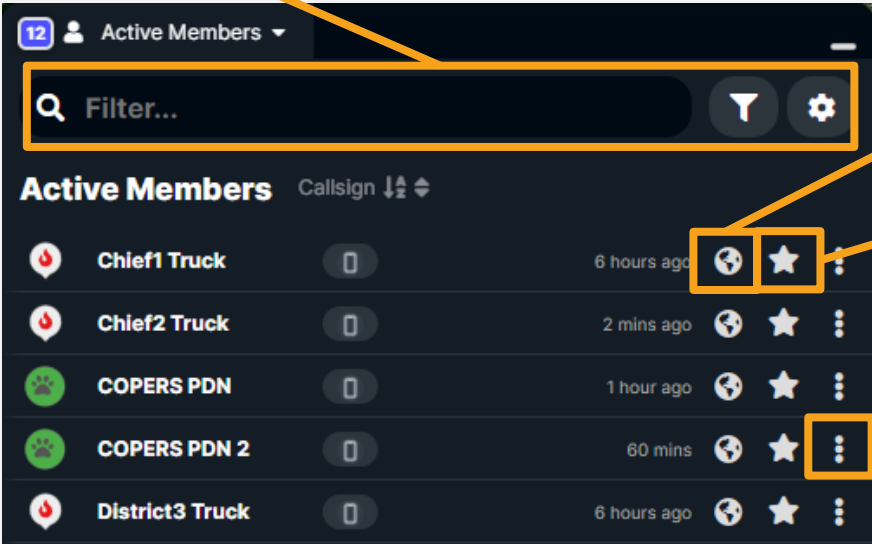
Yellow marker indicates server is connected



## CURRENT SITUATION

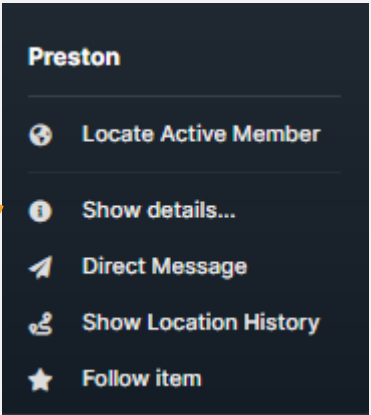
# Active Members

Search

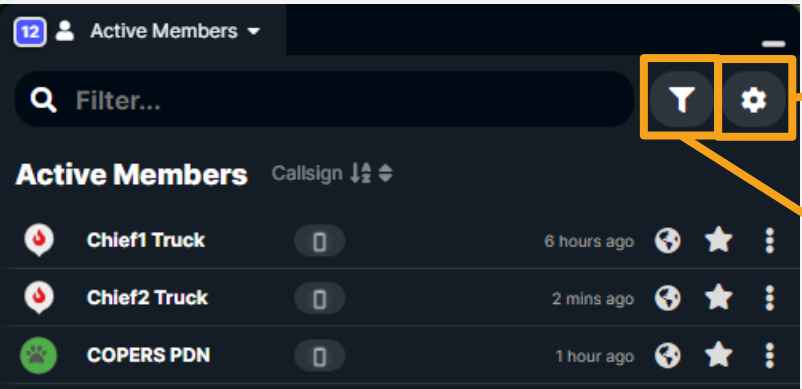


Fly to location

Mark as Item of Interest

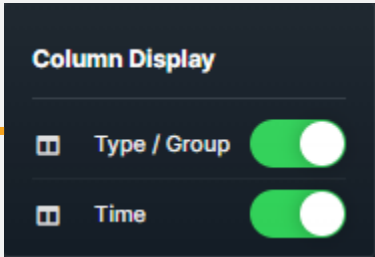


The Active Members Tool provides the capability to view users' callsigns, groups and icon, turn on GPS tracking, how long the member has been logged into the event, collapse or expand a member, locate a member on the map, or filter members by geofence(s).




Change columns displayed


Filter Active Members by Geofence



# Meteorological Aerodrome Reports (METARs)

11  Biometrics

Information Search

3  METAR

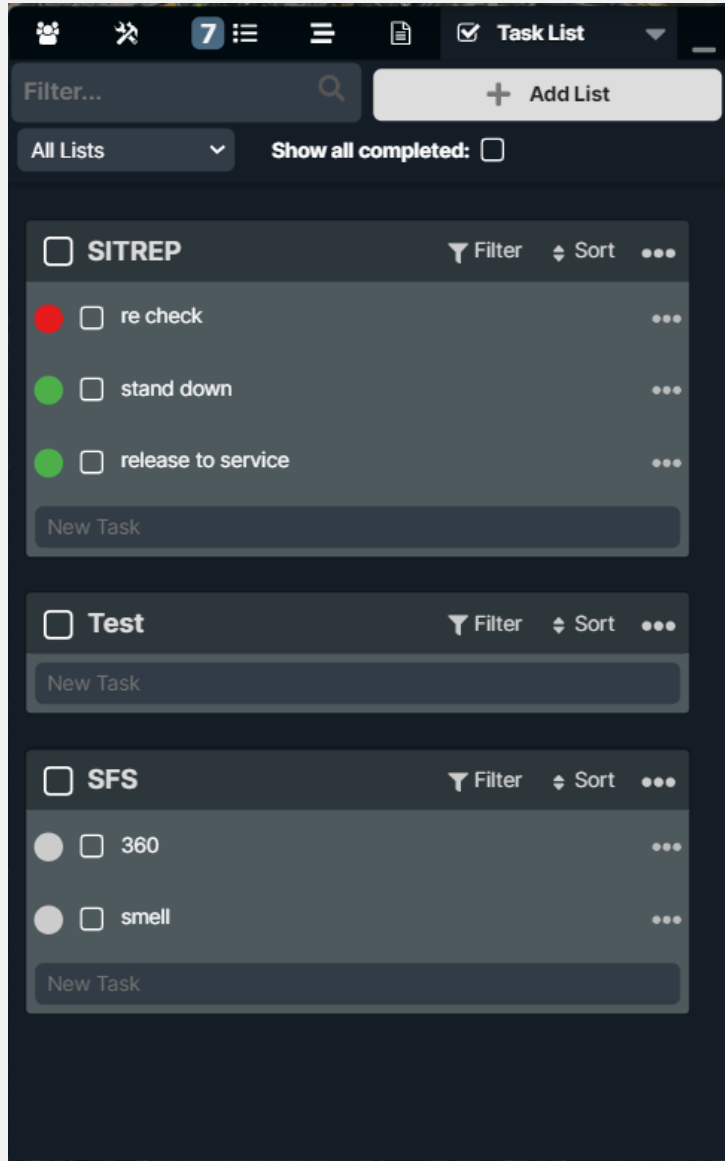
Filter...

Observation Time	ICAO	Type	Wind (kts)	Temperature ...	Flight Category	Latitude (°)	Longitude ...
2020-08-12T18:56:00Z	KFFO	METAR	5	28.7	VFR	39.82	-84.03
2020-08-12T17:56:00Z	KFFO	METAR	4	27.8	VFR	39.82	-84.03
2020-08-12T16:56:00Z	KFFO	SPECI	5	27.0	VFR	39.82	-84.03

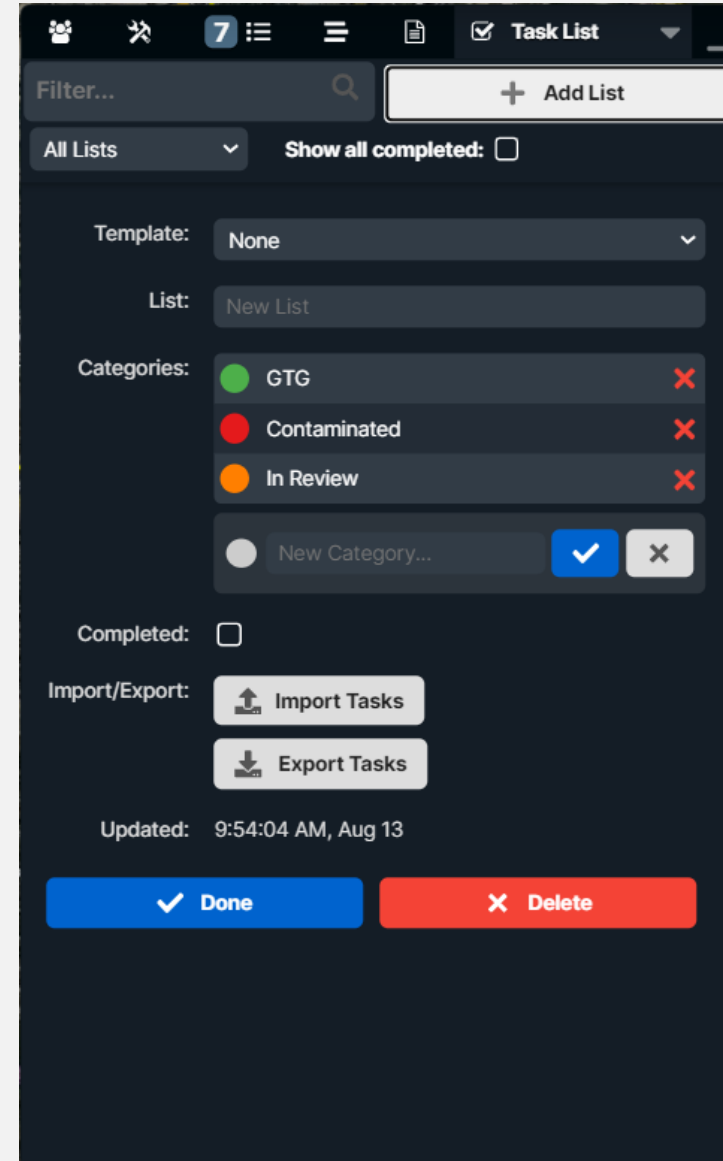
The METAR Tool Provides the current reports based on the event location.

Source: aviationweather.gov

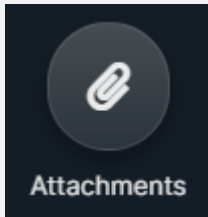
# Task List



The Task List Tool provides and displays a color-coded task list. A single list may be displayed as well as a combination of all lists. Items may be checked on the list as complete and new tasks may be added by clicking and typing a new item. The list may also be sorted by completion.



The option for adding a new list provides options such as the option of using a template, color coded categories, marking the list complete, and importing or exporting tasks.



The Attachments Tool provides the capability to attach and manage files at a given placemark for the event. Placemarks may be added and existing placemarks may be modified or removed.

NOTE: Images added to Attachments are available to the Image Viewer tools

# Attachments



Create New Attachment

Locate Attachment

Edit Attachment

View Attachment

**Add Attachment**  
Enter properties for Attachment

Title:  
Attachment 2020-08-13 at 10:19am / user

Description:

Attachment(s):  
 No file chosen

Accepted file types: CAD Drawings, Calendars, Contacts, Diagrams, Documents, Images, Links, Metafiles, Photos, Presentations, Projects, SVGs, Spreadsheets, and Videos

# Attachments (cont'd)

Zoom



Download as original  
or as ZIP File

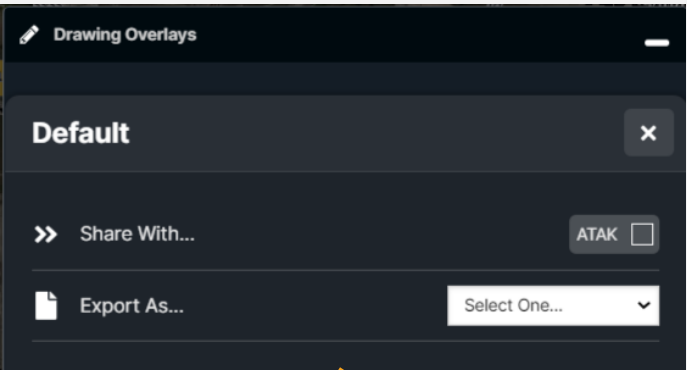
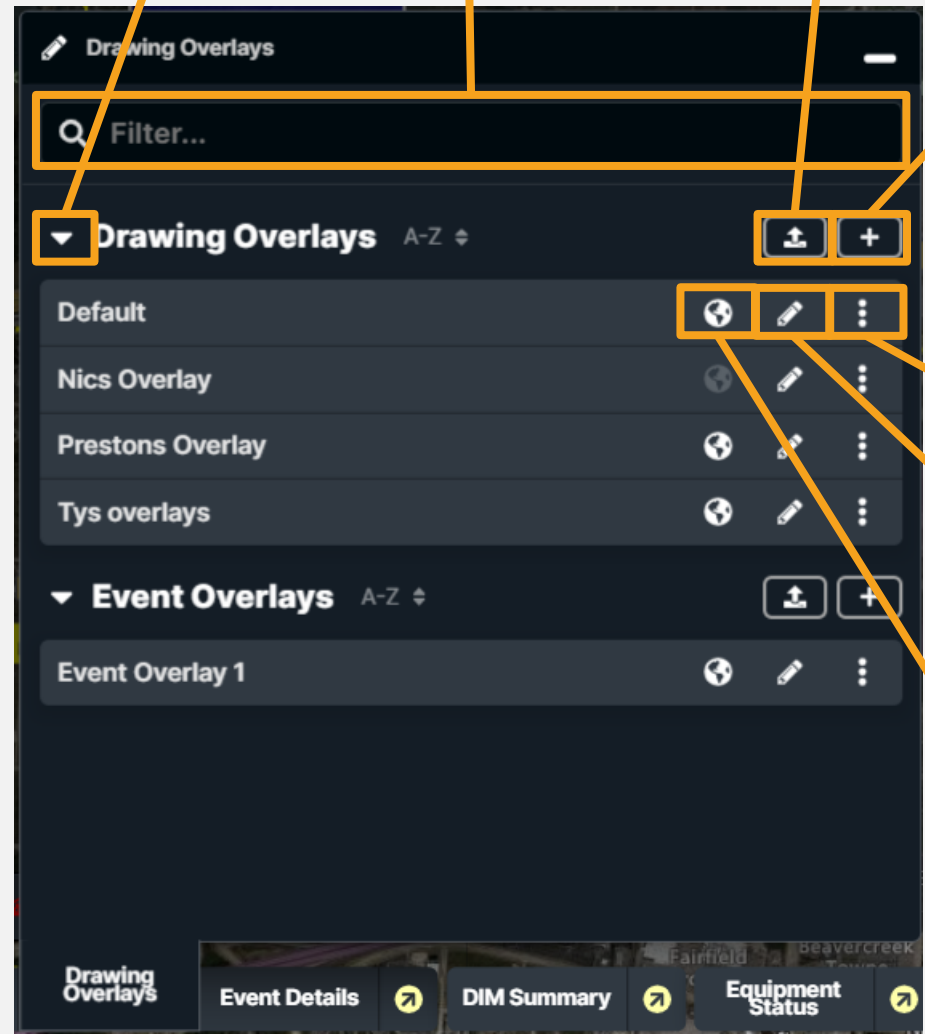
# Drawing Overlays

Expand or  
Condense Overlays

Import Overlay

Filter Overlays

Add New Overlay



Edit Overlay

Edit Overlay

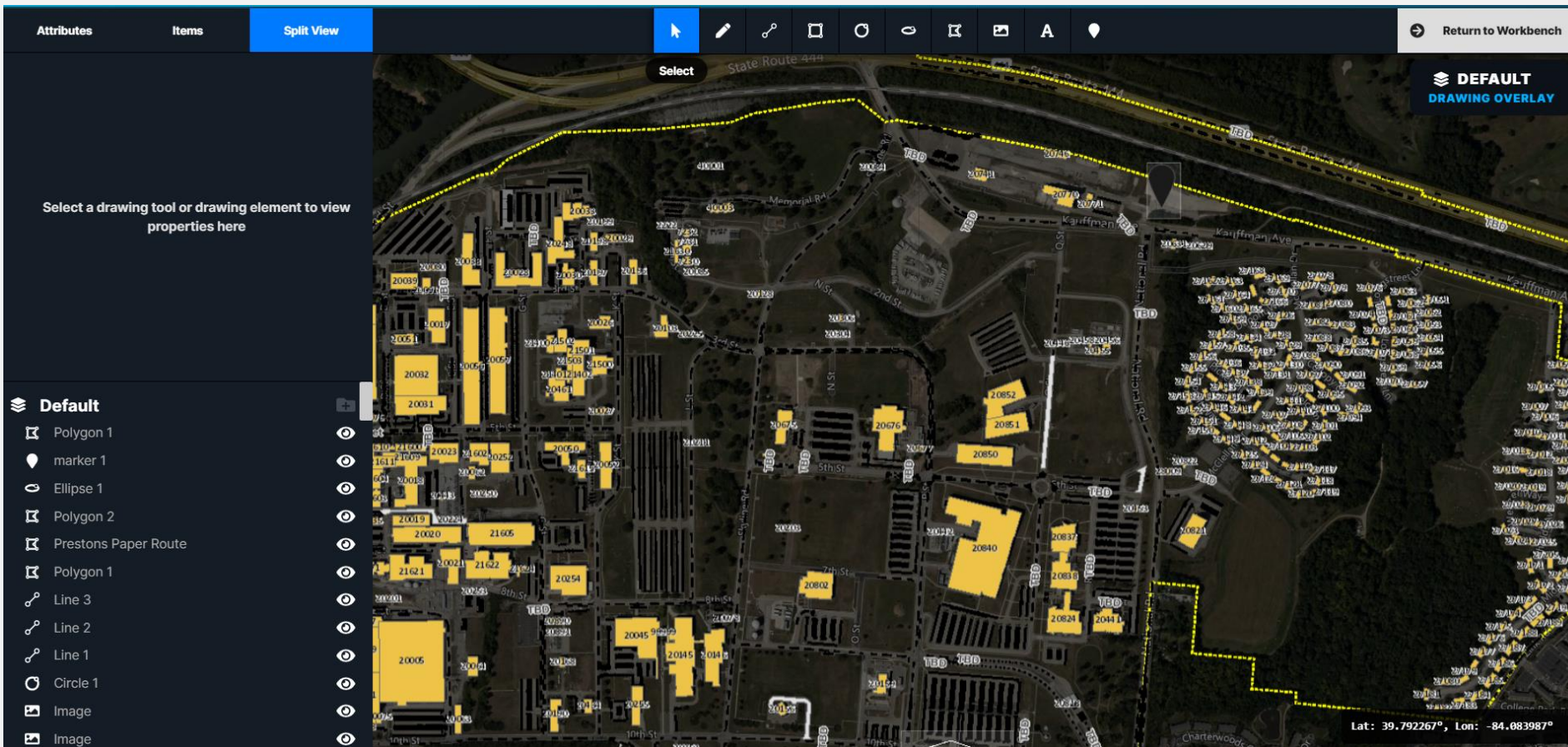
Locate

The Drawing Overlays Tool provides the ability to draw and manage overlay layers on top of the map for this event. Data in the list may be reloaded, selected layers may be edited, deleted, or exported, and new layers may be added or imported.



# Drawing Overlays - Edit

The Add option in the Drawing Overlays Tool provides the ability to create a layer with line drawing, polygon, rectangle, circle, place markers, and text. When the “Add” option is selected, name the layer and add any desired items to the map. After the desired changes are made to the layer, selecting “Done modifying drawing layer” completes the layer and adds it to the map.



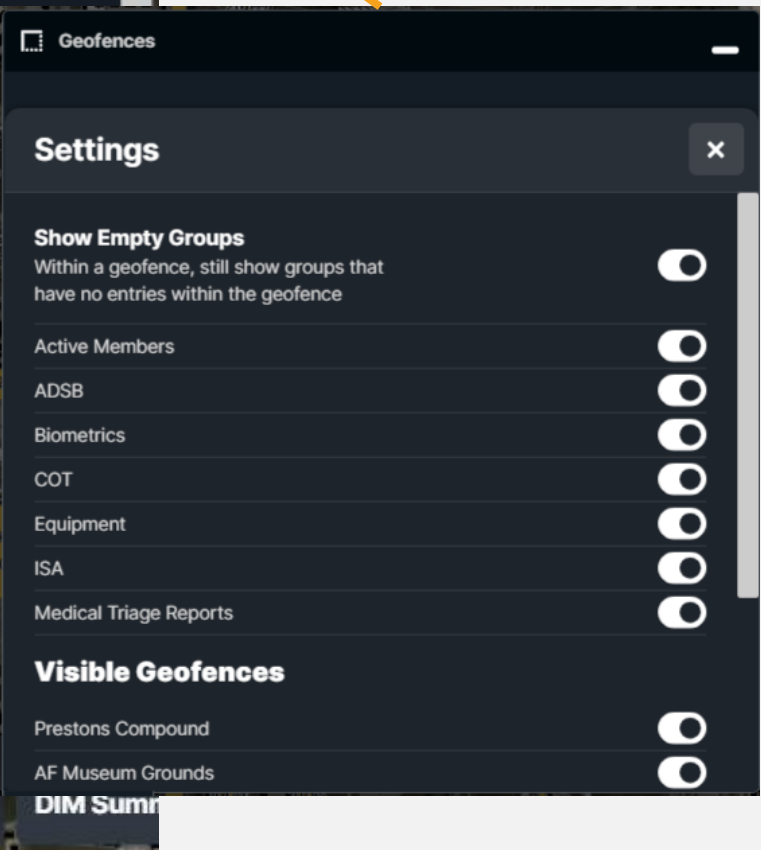
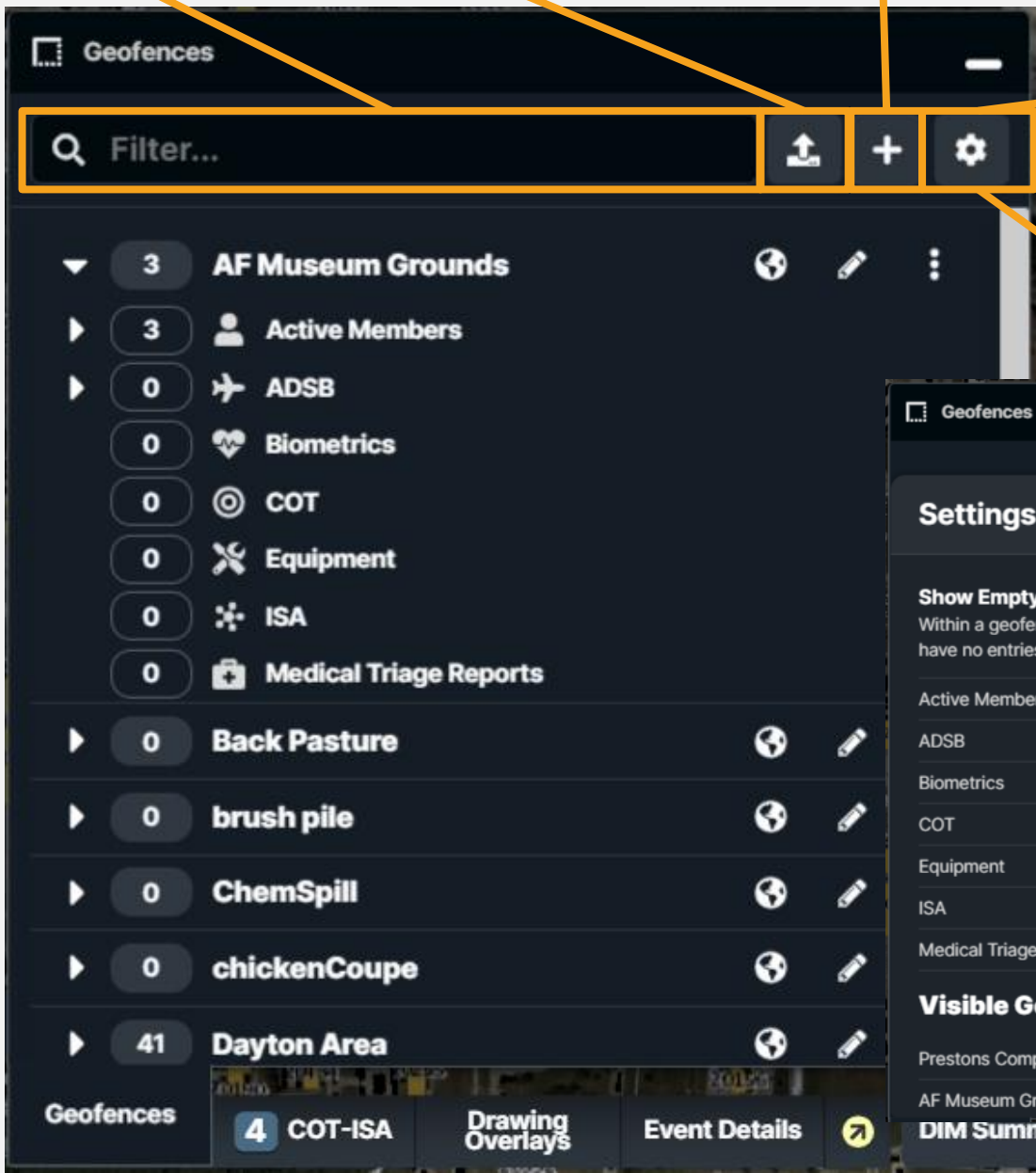
# Geofences

Filter Overlays

Import Geofence

Add New Geofence

Geofence Settings



Geofences provide the ability to create and manage Geofences. To add a new Geofence, click the “Add” button and provide a name for the Geofence. Geofences allow users to track items referenced by area. Items entering or exiting an area will provide alerts. Items may also be filtered by Geofence areas in most tools.



# Geofences (cont'd)

AttributesItemsSplit View

Select


Return to Workbench

AF MUSEUM GROUNDS  
GEOFENCE OVERLAY

Select a drawing tool or drawing element to view properties here

AF Museum Grounds  
Polygon 1

Create a polygon, rectangle, or circular Geofence by using the shape tools at the top of the map. Return to the map by selecting "Return to Workbench".



Lat: 39.796636°, Lon: -84.071453°

# HAZMAT ERG



11     HAZMAT ERG		
Materials Guide Isolate/Protect Map		
Filter...		
ID No	Guide	Name of Material
	153	Toxins
	114	Explosives, division 1.4 or 1.6
	112	Explosives, division 1.1, 1.2, 1.3 or 1.5
	112	Blasting agent, n.o.s.
	158	Biological agents
	112	Ammonium nitrate-fuel oil mixtures
1001	116	Acetylene, dissolved
1002	122	Air, compressed
1003	122	Air, refrigerated liquid (cryogenic li...
1005	125	Anhydrous ammonia
1006	121	Argon, compressed
1008	125	Boron trifluoride, compressed
1009	126	Refrigerant gas R-13B1
1010	116P	Hydrocarbon and butadienes mixt...
1011	115	Butane
1012	115	Butylene
1013	120	Carbon dioxide, compressed

The HAZMAT ERG Tool Provides access to the HAZMAT emergency response guide and toolset. Users may select a material for instructions and to identify an incident on the map.

# HAZMAT ERG — Guide and Isolate and Protect

11

HAZMAT ERG

MaterialsGuideIsolate/ProtectMap

>> 1005125Anhydrous ammonia

GUIDE 125

GASES - CORROSIVE

POTENTIAL HAZARDS

HEALTH

TOXIC; may be fatal if inhaled, ingested or absorbed through skin.

Vapors are extremely irritating and corrosive.

Contact with gas or liquefied gas may cause burns, severe injury and/or frostbite.

Fire will produce irritating, corrosive and/or toxic gases.

Runoff from fire control may cause pollution.

FIRE OR EXPLOSION

Some may burn but none ignite readily.

Vapors from liquefied gas are initially heavier than air and spread along ground.

Some of these materials may react violently with water.

Cylinders exposed to fire may vent and release toxic and/or corrosive gas through pressure relief devices.

Containers may explode when heated.

Ruptured cylinders may rocket.

For UN1005: Anhydrous ammonia, at high concentrations in confined spaces, presents a flammability risk if a source of ignition is introduced

PUBLIC SAFETY

CALL Emergency Response Telephone Number on Shipping Paper first. If Shipping Paper not available or no answer, refer to appropriate telephone number listed on the inside back cover.

As an immediate precautionary measure, isolate spill or leak area for at least 100 meters (330 feet) in all directions.

Keep unauthorized personnel away.

Stay upwind, uphill and/or upstream.

Many gases are heavier than air and will spread along

11

HAZMAT ERG

MaterialsGuideIsolate/ProtectMap

>> 1005125Anhydrous ammonia

IF THERE IS A FIRE, or IF A FIRE IS INVOLVED, go directly to the ERG Guide tab and use the evacuation information shown under PUBLIC SAFETY.

Initial Isolation and Protective Action Distances

Small Spills

(From a small package or small leak from a large package)

First ISOLATE in all Directions	Then PROTECT persons Downwind during	
	Day	Night
30 m (100 ft)	0.1 km (0.1 mi)	0.2 km (0.1 mi)

Container Type: All

Large Spills

Container Type		
First ISOLATE in all Directions.	300M (1000ft)	
Then PROTECT downwind		
DAY		
Low (< 6 mph)	Moderate (6 - 12 mph)	High (> 12 mph)
1.7KM (1.1mi)	1.3KM (0.8mi)	1.0KM (0.6mi)
NIGHT		
Low (< 6 mph)	Moderate (6 - 12 mph)	High (> 12 mph)
4.3KM (2.7mi)	2.3KM (1.4mi)	1.3KM (0.8mi)

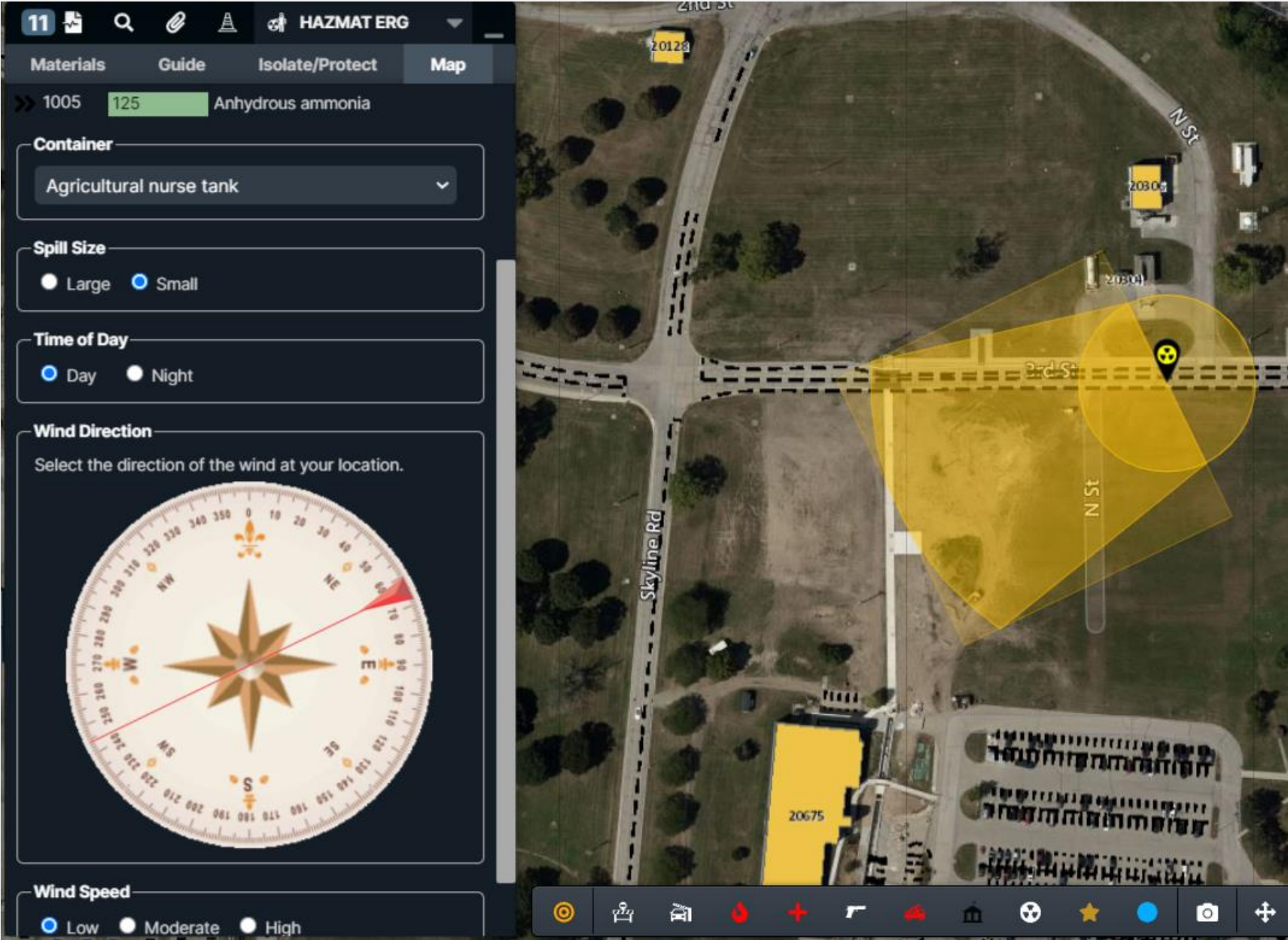
Large Spills

Container Type	
Highway tank truck or trailer	

If a selected material contains information in the Guide or Isolate/Protect section, those tabs may be selected to view the information.



# HAZMAT ERG – Map



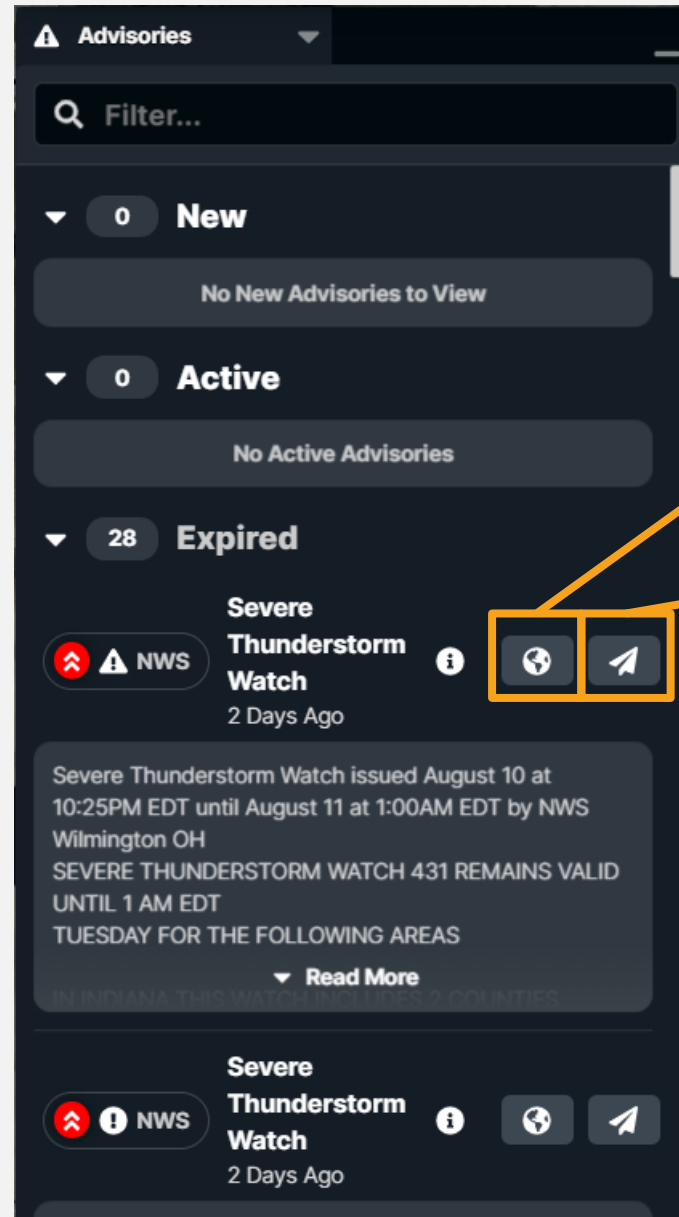
HAZMAT information may be easily added to the map by selecting the Map tab, entering a location, spill size, time of day, and wind direction. The current wind direction may be viewed in the Weather Summary.

# ADVISORIES



# Advisories

Advisors provide users with important notifications such as weather alerts. Details about the notifications may be viewed in more detail, located on the map, or broadcast in a message to other event users.

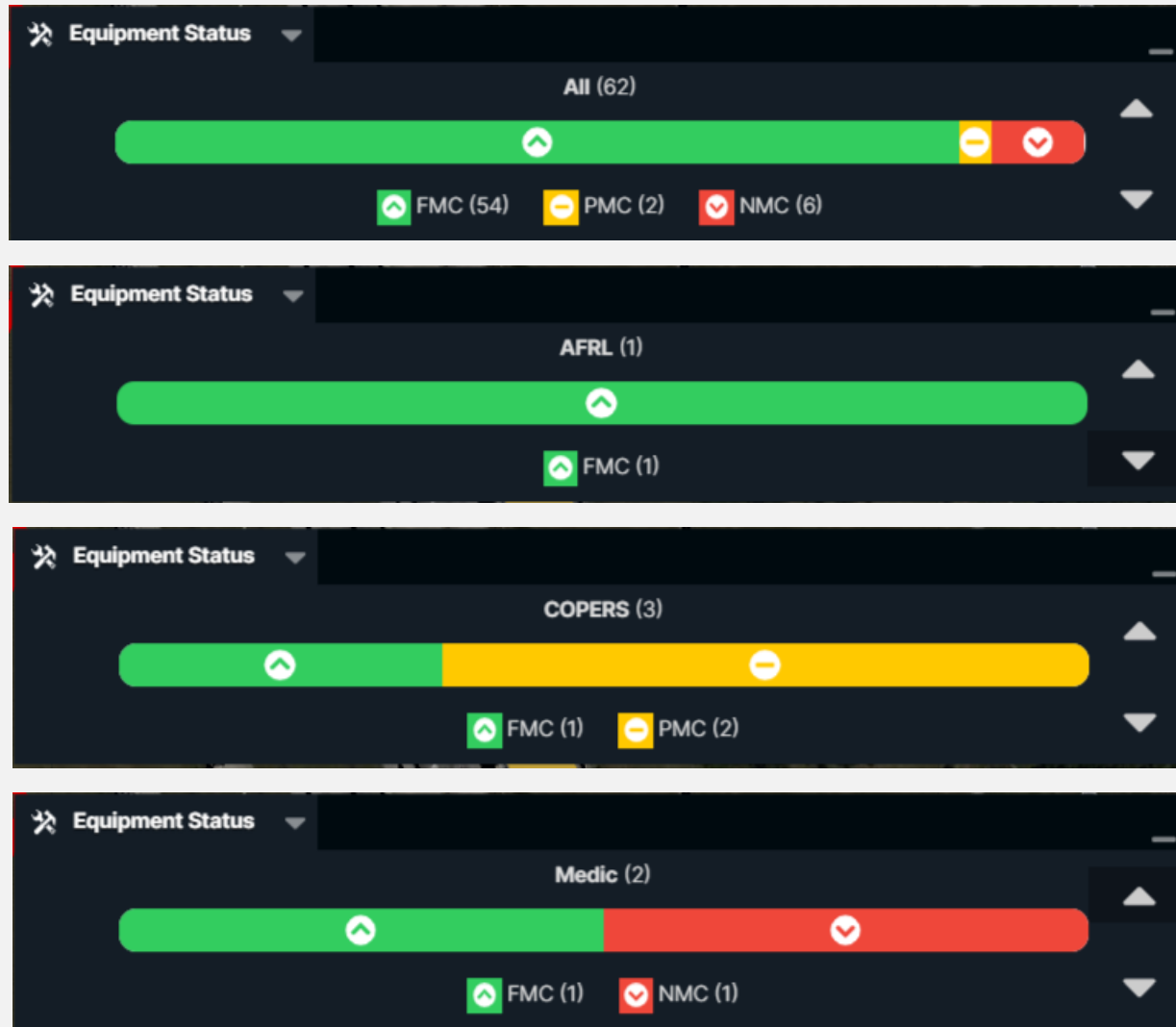


# Equipment Response Roll-Up



Equipment Response Code information may also be viewed in the Equipment Response Code Rollup located at the bottom of the COP. This information is updated when information is updated in the Equipment Tab.

# Equipment Status Roll-Up



Equipment Status Code information may also be viewed in the Equipment Status Code Rollup located at the bottom of the COP. This information is updated when information is updated in the Equipment Tab.

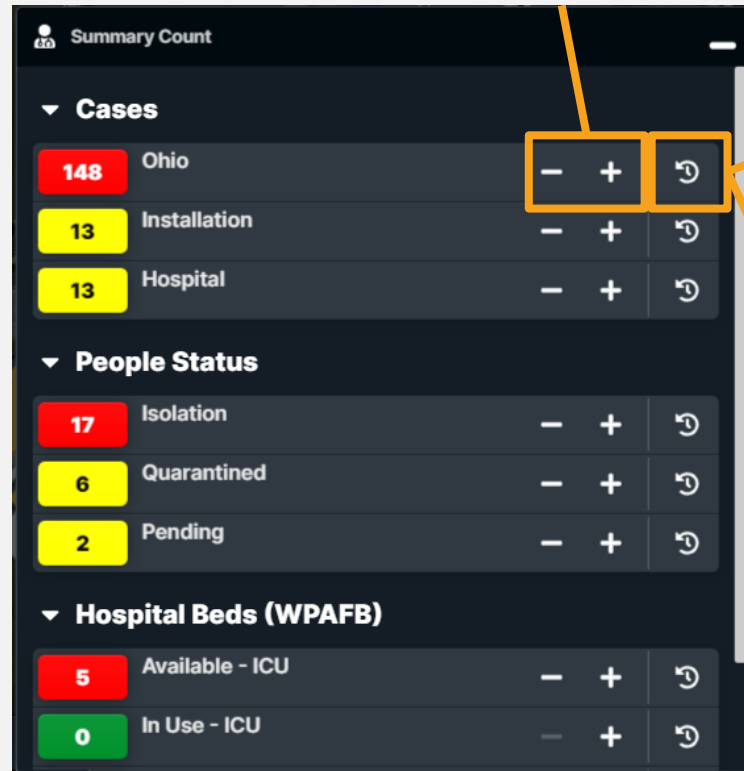
# Summary Count\*

A summary tool can be setup (See Tool Templates in the Admin Training) to provide status counts for any topic desired. In the example below the topic is “Summary Count”, The items are ‘Cases’, ‘People’, and ‘Beds’. The attributes for ‘Cases’ are ‘Ohio’, ‘Installation’, and ‘Hospital’. The color of the count is red/yellow/green and determined by the thresholds setup in the tool configuration.

Add or Subtract  
from Count

View Status Changes

The Summary Count Tool allows users to track case counts by adding or subtracting the number of cases, statuses, hospital beds, and other pertinent information. Status changes may be viewed using the Status Changes button.



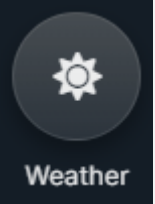
Summary Count		
▼ Cases		
148	Ohio	− + ↺
13	Installation	− + ↺
13	Hospital	− + ↺
▼ People Status		
17	Isolation	− + ↺
6	Quarantined	− + ↺
2	Pending	− + ↺
▼ Hospital Beds (WPAFB)		
5	Available - ICU	− + ↺
0	In Use - ICU	− + ↺



Status Changes for 'Ohio'		
148	ty.hayden	8/11/2020 11:12:46 AM
147	ty.hayden	8/11/2020 10:34:34 AM
147	ty.hayden	8/11/2020 10:29:52 AM
146	ty.hayden	8/11/2020 10:29:52 AM
148	ty.hayden	8/11/2020 10:29:49 AM
147	ty.hayden	8/11/2020 10:29:48 AM
146	ty.hayden	8/11/2020 10:17:57 AM
145	preston.hoeve	8/11/2020 10:11:41 AM

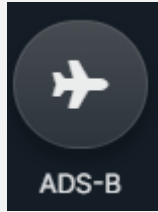
\*This item is based on a tool template.  
The actual tool name may be different.

# Weather Summary



The Weather Summary displays the current weather situation and forecast for the event. The summary may be viewed at the bottom of the COP by selecting Weather from the drop-down menu. Users have the ability to click a link to select locations from the drop-down menu (if provided by an Administrative User) as well as select units.

# Automatic Dependent Surveillance-Broadcast (ADS-B)



39 ADS-B

Filter...

ADS-B Callsign ↓↑

✈️ 72193	Just now	🌐	🏷️	★	⋮
✈️ AAL2206	2 mins ago	🌐	🏷️	★	⋮
✈️ CKS656	Just now	🌐	🏷️	★	⋮
✈️ DAL325	1 min ago	🌐	🏷️	★	⋮
✈️ EJA370	Just now	🌐	🏷️	★	⋮
✈️ FDX247	Just now	🌐	🏷️	★	⋮
✈️ FDX3627	Just now	🌐	🏷️	★	⋮
✈️ GJS4466	Just now	🌐	🏷️	★	⋮

< 2k ft < 6k ft < 10k ft < 25k ft < 35k ft > 35k ft

The tool displays current air traffic on the COP Map and in the ADS-B list. Traffic is reported respective to the event location.

- 🌐 Locate ADS-B
- ℹ️ Show details...
- ✎ Edit...
- 👁️ Hide item
- 🏷️ Always show label
- 📍 Show location history
- ★ Follow item

Aircraft color is indicator of altitude



# ADS-B Functions

42

ADS-B

Filter...

ADS-B

Callsign

AAL395

Just now

AAY2366

Just now

Amazon 01

Just now

DAL578

Just now

EDV4820

Just now

FDX3627

Just now

GJS4466

Just now

GTI2007

Just now

KAL9033

Just now

< 2k ft

< 6k ft

< 10k ft

< 25k ft

< 35k ft

> 35k ft

Click Aircraft on the map

Amazon 01

ADS-B

Just now

39.5056°, -84.6593°

United States

Active

Source

FLIGHTAWARE-WPAFB

State Time

Less than a min

Status

R

Squawk

2421

Altitude

36,200 ft (HAE)

More Info

Filter List

Fly-To Location

View Aircraft Label

Track Item

Custom Name and ICON

Tracking Paused

Test Event 6 ACTIVE

Map

Workspace

Search

39.384202°

-84.287109°



# ADS-B Functions

COPERS

Workspace

Map

Search

42

ADS-B

Filter...

Filter Icon

Settings Icon

ADS-B

Callsign

Sort Icon

Table of ADS-B tracks

< 2k ft

< 6k ft

< 10k ft

< 25k ft

< 35k ft

> 35k ft

N98561

Just now

Icons

More Options

N9878E

Just now

Icons

More Options

PKW783

1 min ago

Icons

More Options

RPA5714

Just now

Icons

More Options

SCX3017

Just now

Icons

More Options

SWA1370

A few secs ago

Icons

More Options

SWA1613

2 mins ago

Icons

More Options

SWA1962

2 mins ago

Icons

More Options

SWA2795

Just now

Icons

More Options

N98561

Locate ADS-B

Show details...

Edit...

Hide item

Always show label

Show location history

Item of Interest

45

ADS-B

Override Properties

Custom Name

Custom Icon

Map

Coordinates: 39.826468° -85.547791°



# ADS-B Functions

COPERS

Workspace

Map

Search

Test Event 6  
ACTIVE

48 ADS-B

Filter...

ADS-B

Callsign

N9114D

Just now

N9258C

Just now

N933JG

Just now

N950JA

Just now

N98561

Just now

N9878E

Just now

PKW783

2 mins ago

RPA5714

Just now

SCX3017

Just now

< 2k ft

< 6k ft

< 10k ft

< 25k ft

< 35k ft

> 35k ft

N98561

ADS-B

Just now

39.6510°, -84.3918°

United States

Active

Source

FLIGHTAWARE-WPAFB

Stale Time

Less than a min

Status

R

Squawk

N/A

Altitude

2,225 ft (HAE)

Settings for N98561

Hide item

Always show label

Show location history

Follow item

OK

# Cursor On Target (COT)

Tool provides access to a list of all the items being reported by the TAK/COT server.

The functionality of COT components operates like the ADS-B functions.

The screenshot displays the COPERS Cursor On Target (COT) interface. On the left, a list of items is shown, including 'AK05-4087' (15 days ago), 'Alpha November' (Just now), 'Bravo Oscar' (Just now), 'Charlie Papa' (Just now), 'JL' (A few secs ago), 'John.leininger' (Just now), 'nbuhrman-test11' (Just now), 'nbuhrman-test23' (5 mins ago), 'Preston' (A few secs ago), 'Swarm Controller' (Just now), 'ty' (Just now), and 'ty.hayden' (Just now). Each item has a star icon and a three-dot menu icon. The 'AK05-4087' item is selected, and its details are shown in a panel on the right. The details panel includes the item name 'AK05-4087', a 'Locate CoT' button, a 'Show details...' button, an 'Edit...' button, a 'Hide item' button, an 'Always show label' button, a 'Show location history' button, a 'Show direction' button, and a 'Follow item' button. The 'Edit...' button is highlighted with a red circle. The details panel also shows the item's status as 'Active' and its altitude as '32,808,397 ft (HAE)'. A red circle highlights the item's location on the map. The 'Override Properties' panel is also visible, showing options for 'Custom Name' and 'Custom Icon'.

**AK05-4087**

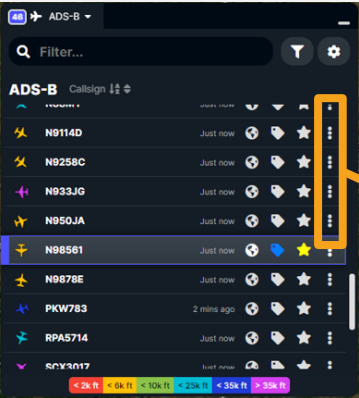
- Locate CoT
- Show details...
- Edit...
- Hide item
- Always show label
- Show location history
- Show direction
- Follow item

**Override Properties**

- Custom Name: No Custom Name Set
- Custom Icon: No Custom Icon Set

# COT- Show details

The 'Show details' option provides access to details about the underlying data, including any measurables and they raw message



**N98561**

- 📍 Locate ADS-B
- 📄 Show details...**
- ✎ Edit...
- 🔍 Hide item
- 📌 Always show label**
- 📍 Show location history
- ★ Item of Interest**

14 CoT

CoT Details

✕

📌 AK05-4087

📄 Details

Hide

Callsign

AK05-4087

Entity Id

d0447f77-be11-410e-a73e-5801d35f7d38

Type

a-u-A-M-F-F

Start Time

15 days ago

Stale Time

2 days

Status

G

Active

☒

How

gigo

Entity

military

Identity

unknown

Dimension

air/mil/fixed/fighter

DD

📍 61.249142°, -149.798277° 📄

Altitude

32,808,397 ft (HAE)

📄 Measurables

Hide

📄 Raw Information

Show

14 CoT

CoT Details

✕

📌 Raw Information

Hide

Event

Detail

\_flow-tags\_

T A K- Server-721b7314

15 days ago

Archive

Color

Argb

-65536

Contact

Callsign

AK05-4087

Link

Parent\_callsign

DIONYSUS

Production\_time

243 days ago

Relation

p-p

Type

a-f-G-U-C

Uid

ANDROID-354267099048750

Precisionlocation

Altsrc

???

Geopointsrc

USER



# Equipment

Search bar

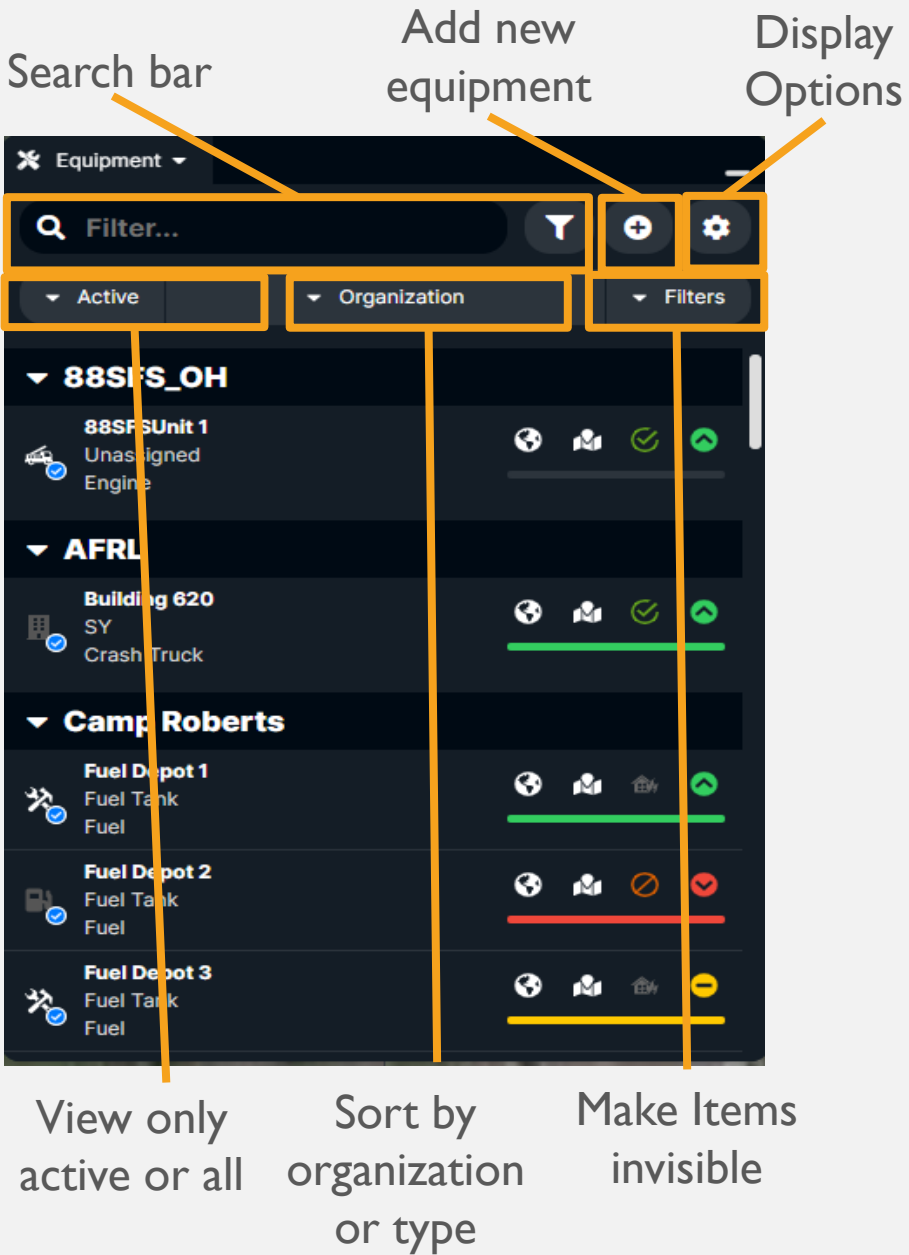
Add new equipment

Display Options

View only active or all

Sort by organization or type

Make Items invisible



Any type of equipment, asset, or managed unit can be represented in the COPERS tool. While integrated sensors are not yet common, the user can manage all the aspects of status and location through the UI.

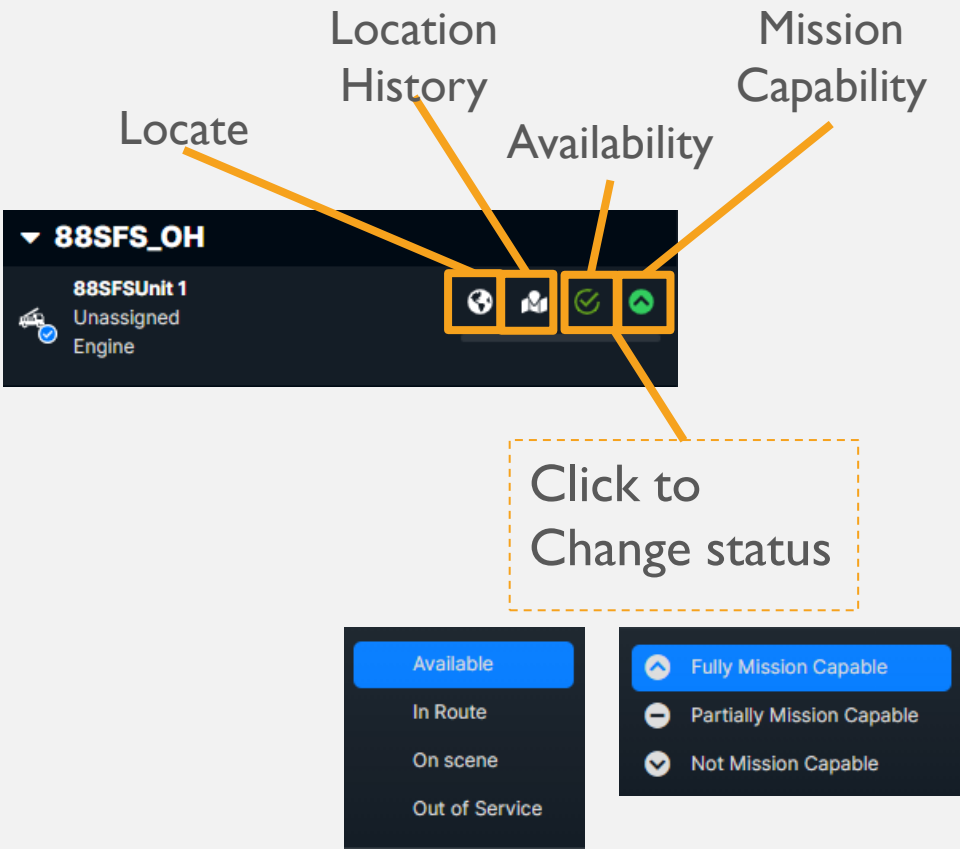
Location History

Mission Capability

Availability

Locate

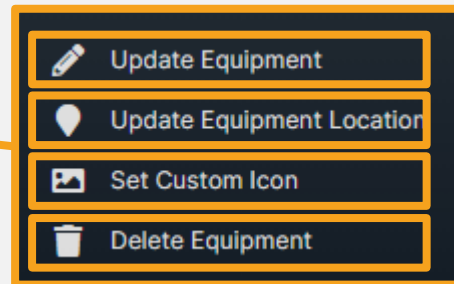
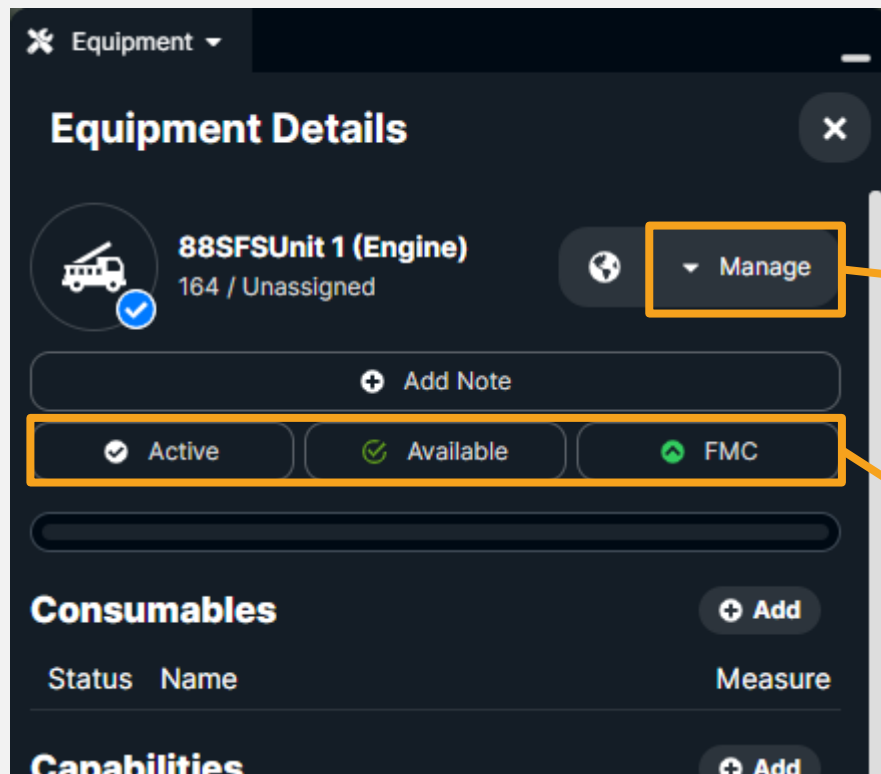
Click to Change status



Status	Icon
Available	Upward arrow
In Route	Rightward arrow
On scene	Downward arrow
Out of Service	Leftward arrow
Fully Mission Capable	Upward arrow
Partially Mission Capable	Rightward arrow
Not Mission Capable	Downward arrow

# Equipment — Manage

Click on the row for a piece of equipment to change how and where equipment is represented on the map.



Change name, organization, type

Manually set the geographic location

Set a custom icon

Destructive delete. No undo

Update status by clicking button

# Equipment - Add New Equipment



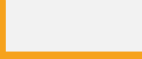
New equipment may be added by using the “Add” button and filling out all pertinent information in the form or by cloning previously used equipment.

### Add New Equipment

Import Fields

Name	Rover1
Organization ID	UHAPL
Operating Unit	Surface
Equipment Type	UGV
Response Code	Available
Status	FMC

Save



Clone an existing piece of equipment



Select from list or type in your own. Click ‘Create’ for new items

- Create "UGV"

Ambulance

Crash Truck

Default

Default Fire

Engine

JISCC




# Equipment — Consumables and Capabilities

Each Asset can be given a list of status able consumables and capabilities. Positions can also be defined and managed for manned equipment. For Example: Battery as a consumable: Communication link as a capability.

Equipment

Equipment Details

 **88SFSUnit 1 (Engine)**  
164 / Unassigned

Manage

Add Note

Active

Available

FMC

Consumables

Add

Capabilities

Add

Positions

Add

Position 1

Briese, Frank

90%

Position 2

Adams, Brendan

90%

Position 3

Garcia, Ray

Name

Measurement Value

Unit of Measure

Status

Fully Mission Capable

Add Consumable

Name

Status

Fully Mission Capable

Add Capability

Add Position

Title

Personnel in Position

Update

Add Position

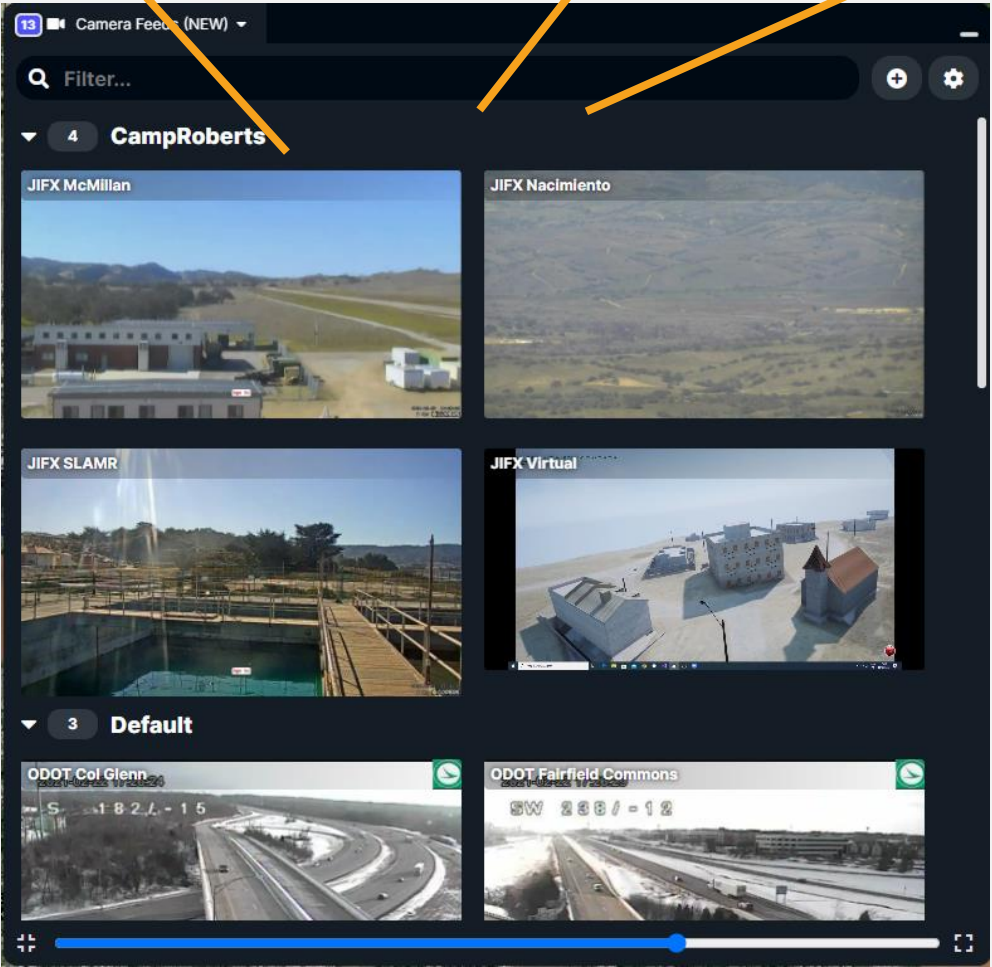
# Stream Video Feeds (new)

Double-click video thumbnail to open in new window

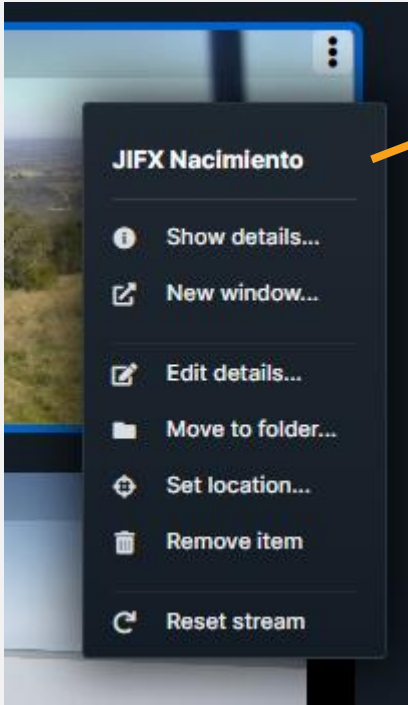
Display/hide video names

Locate video feed on map

Open selected video

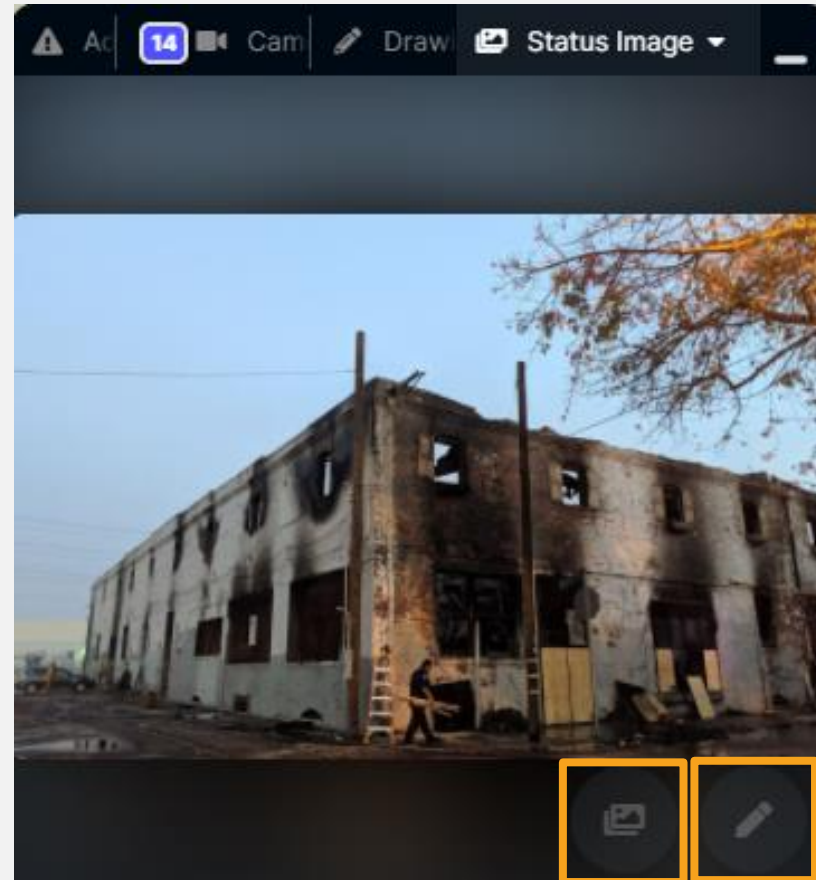


Right-Click or the 3dot button



\*This item is based on a tool template.  
The actual tool name may be different.

# Image Deck\*

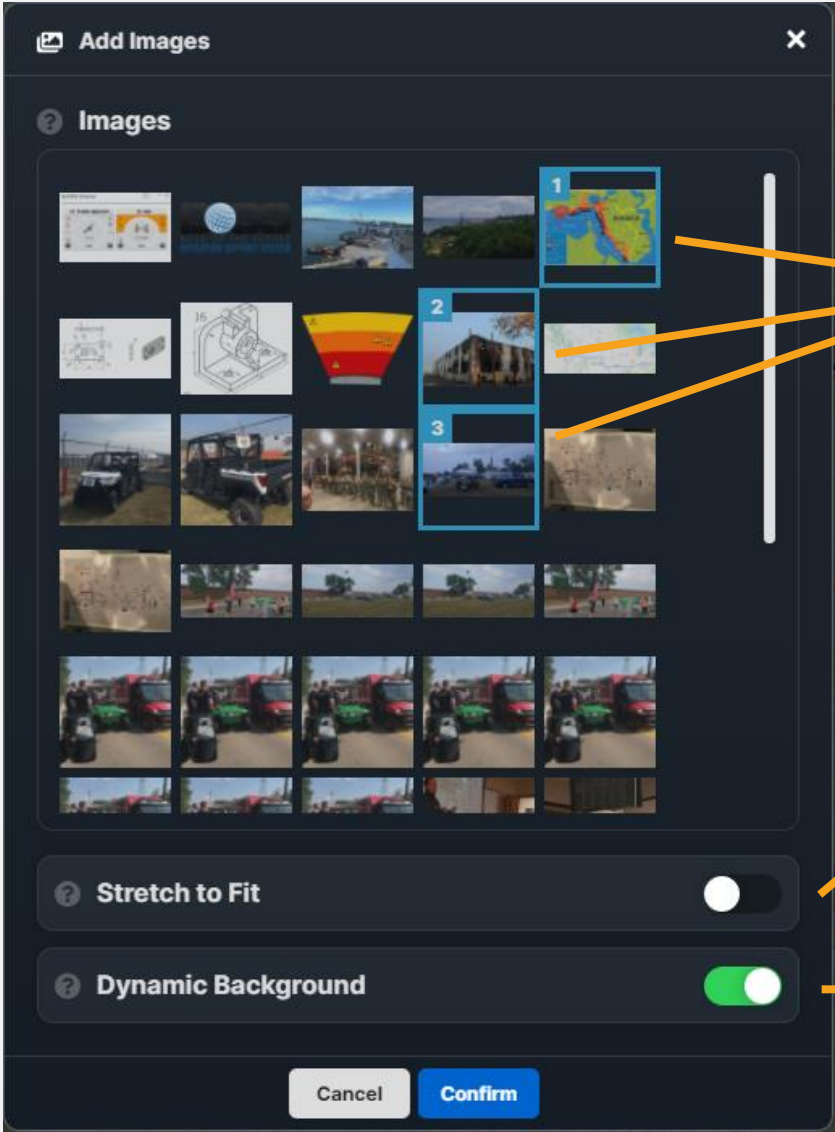


\*This item is based on a tool template.  
The actual tool name may be different.

Change image  
displayed when more  
that one is selected

Edit image(s)  
selection

# Image Viewer – Selection



Edit image(s)  
selection

Number represents  
order images are  
presented

Image will fill to size  
of tool in workspace

Sets background  
color hue when  
images are not  
stretched to fit

The following topics are covered in the  
COPERS (Event) Administrator document:

- ☐ Event Settings
- ☐ Reports
- ☐ Enterprise View